



# Grinder Tips

...for Tub and Horizontal Machines





Recycling and Forestry

# Premium replacement parts for your tub or horizontal grinder!

## KenCoat™

***Kennametal carbide overlay  
application technology!***

- less downtime
- provides up to 30% greater wear life versus competitive embedded-style tips
- holds original shape longer to provide better and more consistent performance

## KenCast™

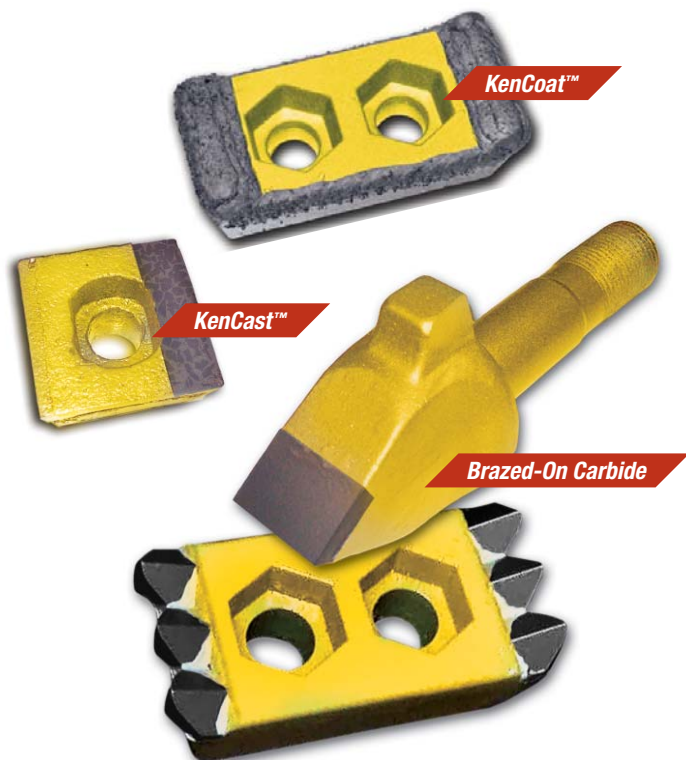
***Best for asphalt, shingle, and  
other extreme applications!***

- superior wear and fracture resistance
- combines the hardness of Kennametal's cemented tungsten carbide with the toughness of air-hardening steel

## Brazed-On Carbide

***Unmatched in the industry!***

- produces more material at day's end
- premier-quality macrocrystalline tungsten carbide inserts, brazed onto an all-steel body; stay securely in place
- ideal for grinding big, clean wood material



To place an order, contact Kennametal or your authorized Kennametal distributor.

# Grinder Tips

## TABLE OF CONTENTS BY MACHINE MANUFACTURER

<b>Bandit®</b> .....	2
<b>CBI® / CMI® / Rexworks® / Norkot®</b> .....	3
<b>Diamond Z® / Hogzilla® / W.H.O.® / FHE®</b> .....	4
<b>DuraTech®</b> .....	5
<b>Morbark®</b> .....	6-7
<b>Peterson®</b> .....	8-9
<b>Vermeer®</b> .....	10-11
<b>Precision Husky® / Toro® / Olathe®</b> .....	12
<b>Packer® / Rayco® / FAE® / ZEHR®</b> .....	13
<b>Weld-On Accessories</b> .....	13

**Kennametal Inc. encourages the safe use of its products.**

**To help avoid personal injury or damage to tools, please:**

- wear approved personal protection equipment, including eye and ear protection, steel-toed shoes, hard hat, and vest
- make sure tools are properly seated and securely retained
- do not strike tools with metal objects – carbide tips could shatter
- exercise care when removing tools
- inspect tools daily. do not use dull, cracked, burred, or bent tools
- operate all machines with safety in mind
- stand clear of machines in use, and make sure protective guards are in place
- do not change tools when the drum is moving or still engaged

Bandit

**Model  
Beast**

Part/Order Number  
**1611563 Flat Cutter**  
• abrasion-resistant

**2041399 Flat Cutter**  
• impact-resistant



Lock Nut Part/Order Number **3525659**

**Model  
Beast**

Part/Order Number  
**1850966 Splitter**  
• abrasion-resistant

**2041397 Splitter**  
• impact-resistant



Lock Nut Part/Order Number **3525659**

**Model  
Beast**

Part/Order Number  
**1998957 Shingle Splitter**  
• abrasion-resistant

**2040927 Shingle Splitter**  
• impact-resistant



Lock Nut Part/Order Number **3525659**

**Model  
Beast**

Part/Order Number  
**1999845 Shingle Fan**  
• 2" fan  
• KenCast technology  
• non-rotating



Lock Nut Part/Order Number **3525659**

**Model  
Beast**

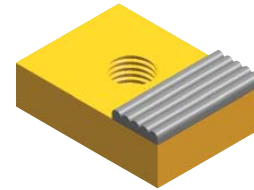
Part/Order Number  
**1594658 Bullet Bit**  
• exceptionally durable



Lock Nut Part/Order Number **3525659**

**Model  
Beast**

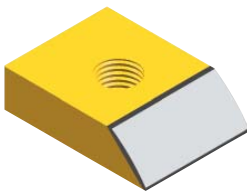
Part/Order Number  
**1931025 Raker**  
• 3/4" x 2" x 2.8"  
• KenCoat overlay  
• 3/4" – 10 UNC thread



Bolt Part/Order Number **3668832**

**Model  
Beast**

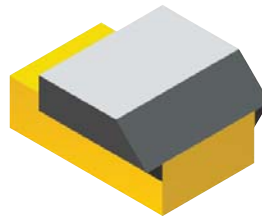
Part/Order Number  
**2034671 Raker**  
• beveled edge  
• 3/4" – 10 UNC thread



Bolt Part/Order Number **3668832**

**Model  
Beast**

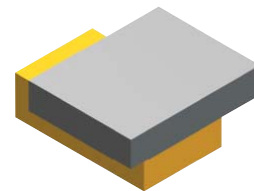
Part/Order Number  
**1999848 Raker**  
• KenCast technology with beveled edge  
• 3/4" – 10 UNC thread



Bolt Part/Order Number **3668832**

**Model  
Beast**

Part/Order Number  
**2450150 Single Raker**  
• KenCast technology with squared edge  
• 3/4" – 10 UNC thread



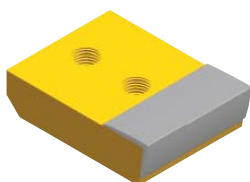
Bolt Part/Order Number **3668832**

see fasteners on page 12

Diamond Z / Hogzilla / W.H.O. / FHE  
 Rexworks / Norkot  
 Duratech  
 Morbark  
 Peterson  
 Vermeer  
 Precision Husky / Toro / Olathe  
 Packer / Rayco / FAE / ZEHR

**Model** CBI  
4800 / 5060

**Part/Order Number**  
**2040751 Striker**  
• 8" x 5-7/8" x 2-1/4" (1-1/4" – 7 thread)  
• 2-side KenCoat overlay



**Model** CBI  
4800 / 5060

**Part/Order Number**  
**2043404 Striker**  
• 8" x 5-7/8" x 2" (1-5/16" holes)  
• KenCast technology



**Model** CBI  
4800 / 5060

**Part/Order Number**  
**2652332 Striker**  
• 9" x 5-7/8" x 2" (1-5/16" holes)  
• KenCast technology



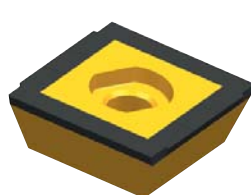
**Model** CMI / Rexworks / Norkot  
Maxi / Biogrind

**Part/Order Number**  
**1837762 (shown)**  
• 2.5" x 2.5"  
• 4-edge KenCoat overlay (5/8" ID)  
**1837761 (MTO)**  
• 2.5" x 2.5"  
• 2-edge KenCoat overlay (5/8" ID)



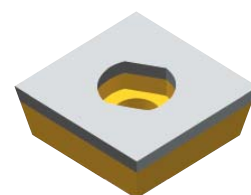
**Model** CMI / Rexworks / Norkot  
Maxi / Biogrind

**Part/Order Number**  
**1837823 (shown)**  
• 2.5" x 2.5"  
• 4-edge brazed-on carbide inserts (5/8" ID)  
**1837824**  
• 2.5" x 2.5"  
• 2-edge brazed-on carbide inserts (5/8" ID)



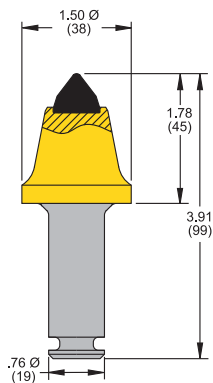
**Model** CMI / Rexworks / Norkot  
Maxi / Biogrind

**Part/Order Number**  
**1012625 (shown)**  
• 2.5" x 2.5"  
• KenCast technology (5/8" ID)  
**2260875**  
• 2.5" x 2.5"  
• KenCast technology (3/4" ID)



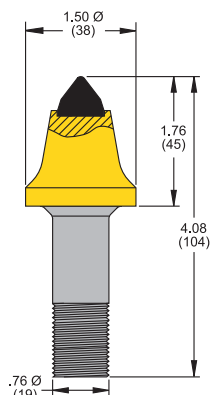
**Model** CMI / Rexworks / Norkot  
Maxi / Biogrind

**Part/Order Number**  
**1010910 C3R Tool**  
• for soft to medium or abrasive cutting conditions



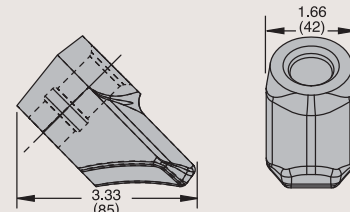
**Model** CMI / Rexworks / Norkot  
Maxi / Biogrind

**Part/Order Number**  
**1010734 C3T Tool**  
• for soft to medium or abrasive cutting conditions  
• threaded nut included



**Model** CMI / Rexworks / Norkot  
Maxi / Biogrind

**Part/Order Number**  
**1886760 C3RB Block**  
• for heavy-duty applications



**Model** CMI / Rexworks / Norkot  
Maxi / Biogrind

**Part/Order Number**  
**1012120 C3R Retainer**  
• lock ring



see fasteners on page 12

Bandit

CBI / CMI /  
Rexworks / Norkot

Diamond Z / Hogzilla /  
W.H.O. / FHE

Duratech

Morbark

Peterson

Vermeer

Precision Husky /  
Toro / Olathe

Packer / Rayco /  
FAE / ZEHR

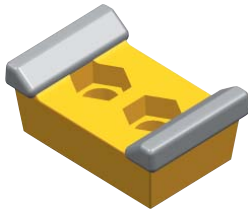
**Model All** Diamond Z / Hogzilla

**Part/Order Number**  
**1835079 (shown)**

- 2-bolt – 2" on centers
- 3.5" x 5.5"
- 4-side KenCoat overlay with corners

**2993224**

- 2-bolt – 2" on centers
- 3.5" x 5.5"
- 4-side KenCoat overlay without corners



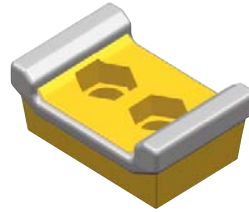
**Model All** Diamond Z / Hogzilla

**Part/Order Number**  
**1930338 (shown)**

- 2-bolt – 2" on centers
- 3.5" x 5.5"
- 6-side KenCoat overlay

**2434936**

- 2-bolt – 2" on centers
- 3.5" x 5.5"
- 8-side KenCoat overlay with face



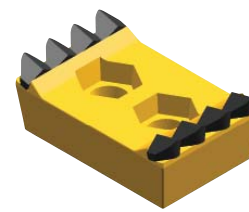
**Model All** Diamond Z / Hogzilla

**Part/Order Number**  
**2046932 Ripper (shown)**

- 2-bolt – 2" on centers
- 3.5" x 5.4"
- abrasion-resistant

**2394828 Ripper**

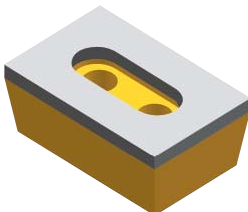
- 2-bolt – 2" on centers
- 3.5" x 5.4"
- impact-resistant



**Model All** Diamond Z / Hogzilla

**Part/Order Number**  
**1981905**

- 2-bolt – 2" on centers
- 3.5" x 5.5"
- KenCast technology



**Model All** Hogzilla

**Part/Order Number**  
**3776434**

- 2-bolt – 1-5/8" on centers
- 2.9" x 4.3"
- 6-side KenCoat overlay



**KenCast tip**  
after more than 40 hours of  
highly abrasive shingle grinding –  
shows only moderate wear!



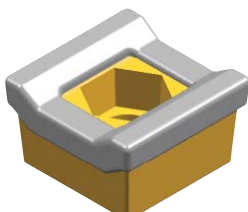
**Model P-10-12** W.H.O. / FHE

**Part/Order Number**  
**2034217 (shown)**

- 1-bolt
- 3" x 3"
- 8-side KenCoat overlay with face and sides

**1611573**

- 1-bolt
- 3" x 3"
- 6-side KenCoat overlay with face



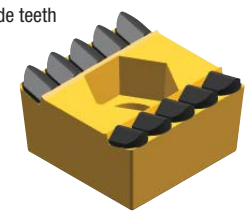
**Model P-10-12** W.H.O. / FHE

**Part/Order Number**  
**2264823 Ripper (shown)**

- 1-bolt
- 2.7" x 2.7"
- impact-resistant
- 10 carbide teeth

**2254784 Ripper**

- for super-aggressive cutting
- 1-bolt
- 2.7" x 2.7"
- impact-resistant
- 6 carbide teeth



**Model P-10-12** W.H.O. / FHE

**Part/Order Number**  
**1931517**

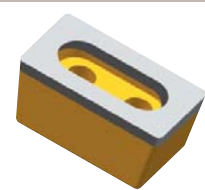
- 2-bolt – 1-5/16" on centers
- 2" x 3.5"
- 6-side KenCoat overlay
- 1.5" mounted



**Model P-10-12** W.H.O. / FHE

**Part/Order Number**  
**1323300**

- 2-bolt – 1-5/16" on centers
- 2" x 3.5"
- KenCast technology
- 1.5" mounted



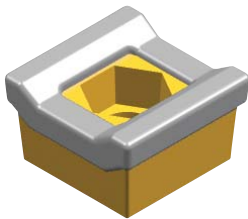
see fasteners on page 12

**Model**
**3010 / 4012**
**Part/Order Number**  
**2034217 (shown)**

- 1-bolt
- 3" x 3"
- 8-side KenCoat overlay with face and sides

**1611573**

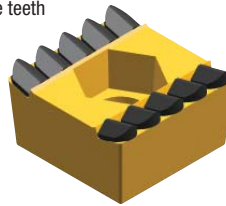
- 1-bolt
- 3" x 3"
- 6-side KenCoat overlay with face


**Model**
**3010 / 4012**
**Part/Order Number**  
**2264823 Ripper (shown)**

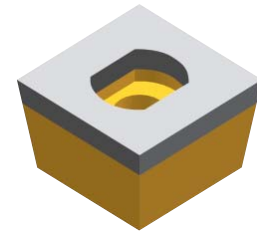
- 1-bolt
- 2.7" x 2.7"
- impact-resistant
- 10 carbide teeth

**2254784 Ripper**

- for super-aggressive cutting
- 1-bolt
- 2.7" x 2.7"
- impact-resistant
- 6 carbide teeth


**Model**
**3010 / 4012**
**Part/Order Number**  
**1313612 (MTO)**

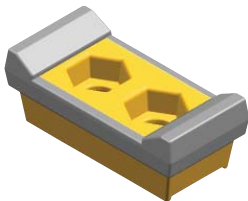
- 1-bolt
- 3" x 3"
- KenCast technology


**Model**
**HD 8-12**
**Part/Order Number**  
**2402073 (shown)**

- 2-bolt – 1-1/2" on centers
- 2.3" x 4.5"
- 6-side KenCoat overlay with rails

**2402030**

- 2-bolt – 1-1/2" on centers
- 2.3" x 4.5"
- 8-side KenCoat overlay with face and rails


**Model**
**HD 8-12**
**Part/Order Number**  
**3788583 Ripper**

- 2-bolt – 1-1/2" on centers
- 1.9" x 4.1"
- 2-side brazed with rails



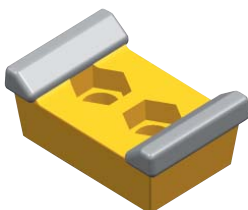
Log on to  
[www.kennametal.com](http://www.kennametal.com)  
 to learn more about our  
 complete line of products  
 and services.

**Model**
**Horizontal Grinders**
**Part/Order Number**  
**1835079 (shown)**

- 2-bolt – 2" on centers
- 3.5" x 5.5"
- 4-side KenCoat overlay with corners

**2993224**

- 2-bolt – 2" on centers
- 3.5" x 5.5"
- 4-side KenCoat overlay without corners


**Model**
**Horizontal Grinders**
**Part/Order Number**  
**1930338 (shown)**

- 2-bolt – 2" on centers
- 3.5" x 5.5"
- 6-side KenCoat overlay

**2434936**

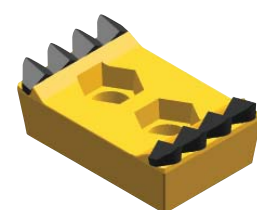
- 2-bolt – 2" on centers
- 3.5" x 5.5"
- 8-side KenCoat overlay with face


**Model**
**Horizontal Grinders**
**Part/Order Number**  
**2046932 Ripper (shown)**

- 2-bolt – 2" on centers
- 3.5" x 5.4"
- abrasion-resistant

**2394828 Ripper**

- 2-bolt – 2" on centers
- 3.5" x 5.4"
- impact-resistant



see fasteners on page 12

Bandit

CBI / CMI /  
Rexworks / Norkot

Diamond Z / Hogzilla /  
W.H.O. / FHE

Duratech

Morbark

Peterson

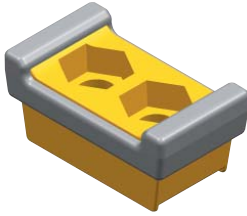
Vermeer

Precision Husky /  
Toro / Olathe

Packer / Rayco /  
FAE / ZEHR

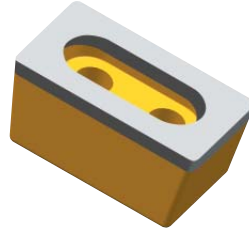
**Model**  
950 / 1000 / 1100 / 1200 / 2600 / 3600

- Part/Order Number**  
**1931517**
- 2-bolt – 1-5/16" on centers
  - 2" x 3.5"
  - 6-side KenCoat overlay
  - 1.5" mounted



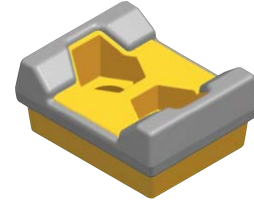
**Model**  
1100 / 1200 / 3600

- Part/Order Number**  
**1323300**
- 2-bolt – 1-5/16" on centers
  - 2" x 3.5"
  - KenCast technology
  - 1.5" mounted



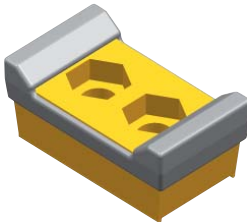
**Model**  
1200

- Part/Order Number**  
**3384637**
- 2-bolt – 1-1/2" on centers
  - 2.7" x 3.4"
  - 6-side KenCoat overlay
  - flat back



**Model**  
1200XL / 1250 / 1300 / 3800 / 4600XL

- Part/Order Number**  
**1855230**
- 2-bolt – 1-11/16" on centers
  - 2.8" x 4.8"
  - 6-side KenCoat overlay with rails



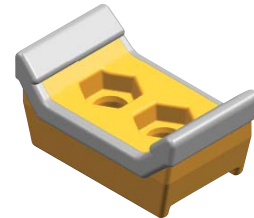
**Model**  
1200XL / 1250 / 1300 / 3800 / 4600XL

- Part/Order Number**  
**3134428**
- 2-bolt – 1-11/16" on centers
  - 3" x 5.1"
  - 8-side KenCoat overlay



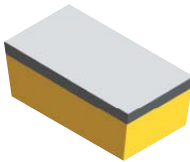
**Model**  
1200XL / 1250 / 1300 / 3800 / 4600XL

- Part/Order Number**  
**3645033 Knife Edge**
- 2-bolt – 1-11/16" on centers
  - 2.8" x 4.8" x 2.1"
  - 6-side KenCoat overlay with rails



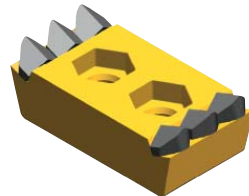
**Model**  
1200XL / 1250 / 1300 / 3800 / 4600XL

- Part/Order Number**  
**2638852**
- 2-bolt – 1-11/16" on centers
  - 2.5" x 4.8"
  - KenCast technology solid face (threaded 3/4"-16 lugs in back)



**Model**  
1200XL / 1250 / 1300 / 4600XL

- Part/Order Number**  
**2437966 Ripper**
- 2-bolt – 1-11/16" on centers
  - 2.8" x 5.1"
  - impact-resistant



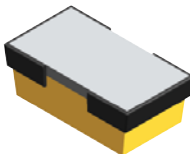
**Model**  
1400 / 1500

- Part/Order Number**  
**2271876**
- 2-bolt – 2" on centers
  - 2.8" x 5.3"
  - 6-side KenCoat overlay
  - flat back



**Model**  
1200XL / 1250 / 1300 / 3800 / 4600XL

- Part/Order Number**  
**3774512**
- 2-bolt – 1-11/16" on centers
  - 2.8" x 5"
  - KenCast technology with wraparound hardfacing



**Model**  
1400 / 1500

- Part/Order Number**  
**3127912 Ripper**
- 2-bolt – 2" on centers
  - 2.7" x 5.1"
  - impact-resistant
  - flat back

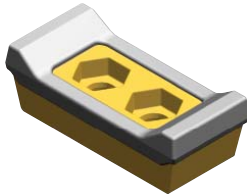


see fasteners on page 12

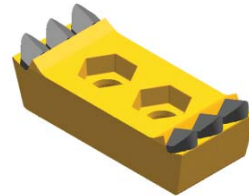
**Model**  
**1600 / 6600**

- Part/Order Number**  
**2604148 (shown)**
- 2-bolt – 2" on centers
  - 3" x 6.5"
  - 8-side KenCoat overlay
  - flat back

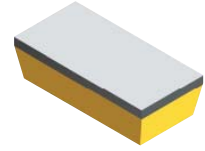
- 2604163**
- 2-bolt – 2" on centers
  - 3" x 6.5"
  - 6-side KenCoat overlay
  - flat back


**Model**  
**1600 / 6600**

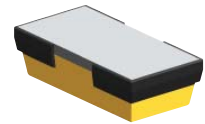
- Part/Order Number**  
**2607173 Ripper**
- 2-bolt – 2" on centers
  - 3" x 6.5"
  - impact-resistant
  - flat back


**Model**  
**1600 / 6600**

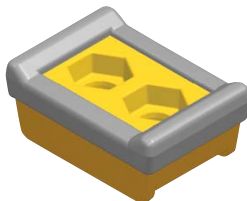
- Part/Order Number**  
**2885057**
- 2-bolt – 2" on centers
  - 3" x 6.5"
  - KenCast technology
  - solid face
  - flat back


**Model**  
**1600 / 6600**

- Part/Order Number**  
**3838092**
- 2-bolt – 2" on centers
  - 3.3" x 6.5"
  - KenCast technology
  - solid face with wraparound hardfacing


**Model**  
**3600 / 4600**

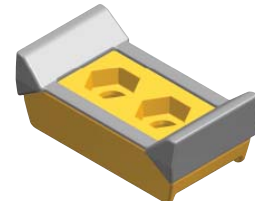
- Part/Order Number**  
**3117793**
- 2-bolt – 1-9/16" on centers
  - 2.8" x 4"
  - 8-side KenCoat overlay with rails


**Model**  
**5600 / 7600**

- Part/Order Number**  
**3077198**
- 2-bolt – 2" on centers
  - 3.3" x 6.3"
  - 8-side KenCoat overlay with rails

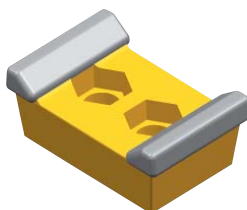

**Model**  
**5600 / 7600**

- Part/Order Number**  
**3644219 Knife Edge**
- 2-bolt – 2" on centers
  - 3.6" x 6.3" x 2.3"
  - 6-side KenCoat overlay with rails


**Model**  
**5600 (early models)**

- Part/Order Number**  
**1835079 (shown)**
- 2-bolt – 2" on centers
  - 3.5" x 5.5"
  - 4-side KenCoat overlay with corners

- 2993224**
- 2-bolt – 2" on centers
  - 3.5" x 5.5"
  - 4-side KenCoat overlay without corners


**Model**  
**5600 (early models)**

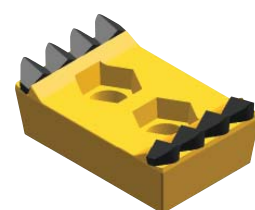
- Part/Order Number**  
**1930338 (shown)**
- 2-bolt – 2" on centers
  - 3.5" x 5.5"
  - 6-side KenCoat overlay

- 2434936**
- 2-bolt – 2" on centers
  - 3.5" x 5.5"
  - 8-side KenCoat overlay with face


**Model**  
**5600 (early models)**

- Part/Order Number**  
**2046932 Ripper (shown)**
- 2-bolt – 2" on centers
  - 3.5" x 5.4"
  - abrasion-resistant

- 2394828 Ripper**
- 2-bolt – 2" on centers
  - 3.5" x 5.4"
  - impact-resistant



see fasteners on page 12

Bandit

CBI / CMI /  
Rexworks / Norkot

Diamond Z / Hogzilla /  
W.H.O. / FHE

Duratech

Morbark

Peterson

Vermear

Precision Husky /  
Toro / Olathe

Packer / Rayco /  
FAE / ZEHR

**Model**  
HC2400 / HC3400

**Part/Order Number**  
**2034217 (shown)**

- 1-bolt
- 3" x 3"
- 8-side KenCoat overlay with face and sides

**1611573**

- 1-bolt
- 3" x 3"
- 6-side KenCoat overlay with face



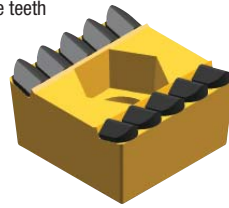
**Model**  
HC2400 / HC3400

**Part/Order Number**  
**2264823 Ripper (shown)**

- 1-bolt
- 2.7" x 2.7"
- impact-resistant
- 10 carbide teeth

**2254784 Ripper**

- for super-aggressive cutting
- 1-bolt
- 2.7" x 2.7"
- impact-resistant
- 6 carbide teeth



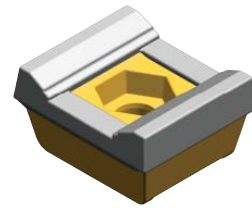
**Model**  
HC5400

**Part/Order Number**  
**2435473 (shown)**

- 1-bolt
- 3.3" x 3.8"
- 8-side KenCoat overlay with face and rails

**1867779**

- 1-bolt
- 3.3" x 3.8"
- 6-side KenCoat overlay with rails



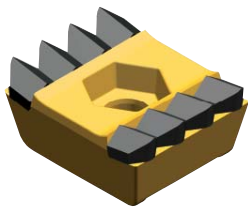
**Model**  
HC5400

**Part/Order Number**  
**2228270 Ripper (shown)**

- 1-bolt
- 3.3" x 3.8"
- abrasion-resistant

**2250380 Ripper**

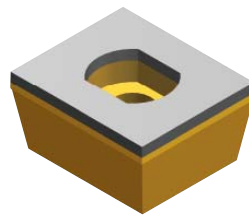
- 1-bolt
- 3.3" x 3.8"
- impact-resistant



**Model**  
HC5400

**Part/Order Number**  
**1985773**

- 1-bolt
- 3.3" x 3.8"
- KenCast technology
- flat back



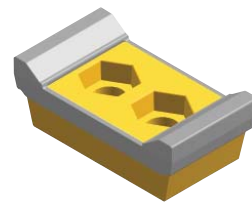
**Model**  
HC2700 / HC4700

**Part/Order Number**  
**2418497 (shown)**

- 2-bolt – 1-11/16" on centers
- 2.8" x 5.1"
- 6-side KenCoat overlay
- flat back

**2434940**

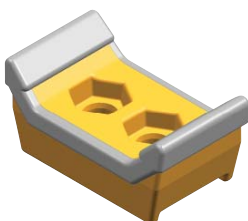
- 2-bolt – 1-11/16" on centers
- 2.8" x 5.1"
- 8-side KenCoat overlay with face
- flat back



**Model**  
HC2700 / HC4700

**Part/Order Number**  
**3645033 Knife Edge**

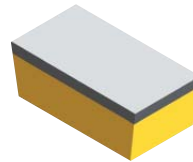
- 2-bolt – 1-11/16" on centers
- 2.8" x 4.8" x 2.1"
- 6-side KenCoat overlay with rails



**Model**  
HC2700 / HC4700

**Part/Order Number**  
**2638852**

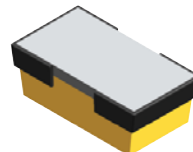
- 2-bolt – 1-11/16" on centers
- 2.5" x 4.8"
- KenCast technology solid face (threaded 3/4"-16 lugs in back)



**Model**  
HC2700 / HC4700

**Part/Order Number**  
**3774512**

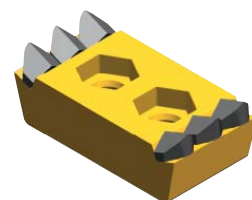
- 2-bolt – 1-11/16" on centers
- 2.8" x 5"
- KenCast technology with wraparound hardfacing



**Model**  
HC2700 / HC4700

**Part/Order Number**  
**2437966 Ripper**

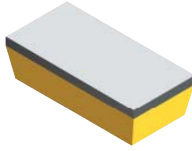
- 2-bolt – 1-11/16" on centers
- 2.8" x 5.1"
- impact-resistant



see fasteners on page 12

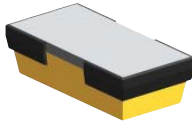
**Model**  
HC5700 / HC6700

**Part/Order Number**  
**2885057**  
• 2-bolt – 2” on centers  
• 3” x 6.5”  
• KenCast technology  
solid face  
• flat back



**Model**  
HC5700 / HC6700

**Part/Order Number**  
**3838092**  
• 2-bolt – 2” on centers  
• 3.3” x 6.5”  
• KenCast technology  
solid face with  
wraparound  
hardfacing



**Model**  
HC5700 / HC6700

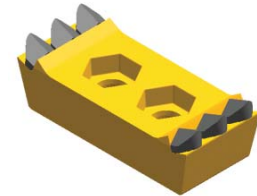
**Part/Order Number**  
**2604148 (shown)**  
• 2-bolt – 2” on centers  
• 3” x 6.5”  
• 8-side KenCoat overlay  
• flat back

**2604163**  
• 2-bolt – 2” on centers  
• 3” x 6.5”  
• 6-side KenCoat overlay  
• flat back



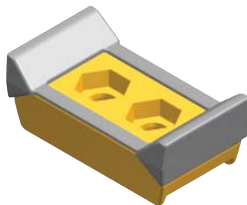
**Model**  
HC5700 / HC6700

**Part/Order Number**  
**2607173 Ripper**  
• 2-bolt – 2” on centers  
• 3” x 6.5”  
• impact-resistant  
• flat back



**Model**  
HC5700 / HC6700

**Part/Order Number**  
**3644219 Knife Edge**  
• 2-bolt – 2” on centers  
• 3.6” x 6.3” x 2.3”  
• 6-side KenCoat overlay with rails



**Model**  
HC7400

**Part/Order Number**  
**2434936 (shown)**  
• 2-bolt – 2” on centers  
• 3.5” x 5.5”  
• 8-side KenCoat overlay with face

**1930338**  
• 2-bolt – 2” on centers  
• 3.5” x 5.5”  
• 6-side KenCoat overlay

**1835079**  
• 2-bolt – 2” on centers  
• 3.5” x 5.5”  
• 4-side KenCoat overlay  
with corners

**2993224**  
• 2-bolt – 2” on centers  
• 3.5” x 5.5”  
• 4-side KenCoat overlay  
without corners



**Model**  
HC7400

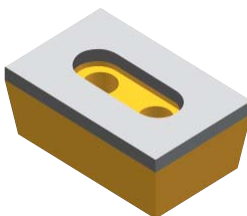
**Part/Order Number**  
**2046932 Ripper (shown)**  
• 2-bolt – 2” on centers  
• 3.5” x 5.4”  
• abrasion-resistant

**2394828 Ripper**  
• 2-bolt – 2” on centers  
• 3.5” x 5.4”  
• impact-resistant



**Model**  
HC7400

**Part/Order Number**  
**1981905**  
• 2-bolt – 2” on centers  
• 3.5” x 5.5”  
• KenCast technology



see fasteners on page 12

Bandit  
 CBI / CMI / Rexworks / Norkot  
 Diamond Z / Hogzilla / W.H.O. / FHE  
 Duratech  
 Morbark  
 Peterson  
 Vermeer  
 Precision Husky / Toro / Olathe  
 Packer / Rayco / FAE / ZEHR


**Model**  
TG-400 / 525

Part/Order Number with Hammer Body  
**2034217 (shown)**

- 1-bolt
- 3" x 3"
- 8-side KenCoat overlay with face and sides

**1611573**

- 1-bolt
- 3" x 3"
- 6-side KenCoat overlay with face



**Model**  
TG-400 / 525

Part/Order Number with Hammer Body  
**1313612 (MTO)**

- 1-bolt
- 3" x 3"
- KenCast technology



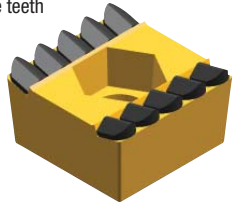
**Model**  
TG-400 / 525

Part/Order Number with Hammer Body  
**2264823 Ripper (shown)**

- 1-bolt
- 2.7" x 2.7"
- impact-resistant
- 10 carbide teeth

**2254784 Ripper**

- for super-aggressive cutting
- 1-bolt
- 2.7" x 2.7"
- impact-resistant
- 6 carbide teeth



**Model**  
TG-5000 / 9000 / HG-365 / 525 / 4000 / 6000

Part/Order Number with Duplex Drum  
**3880080 (shown)**

- 1-bolt
- 3.3" x 3.8"
- 8-side KenCoat overlay with sides and rails

**3880079**


- 1-bolt
- 3.3" x 3.8"
- 6-side KenCoat overlay with rails



**Model**  
HG-365 / 525 / 4000 / 6000

Part/Order Number with Duplex Drum  
**3901860 Ripper**

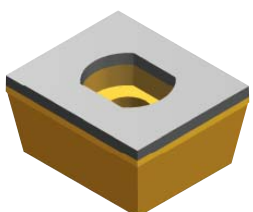
- 1-bolt
- 3" x 3.7"
- impact-resistant
- with rails



**Model**  
TG-9000 / HG-365 / 525 / 4000 / 6000

Part/Order Number with Duplex Drum  
**1985773**

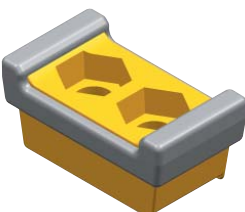
- 1-bolt
- 3.3" x 3.8"
- KenCast technology
- flat back



**Model**  
TG-5000 / HG-200

Part/Order Number with Duplex Drum  
**1931517**

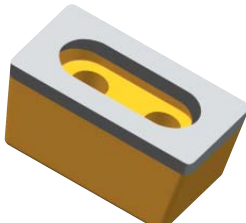
- 2-bolt – 1-5/16" on centers
- 2" x 3.5"
- 6-side KenCoat overlay
- 1.5" mounted



**Model**  
TG / HG

Part/Order Number with Duplex Drum  
**1323300**

- 2-bolt – 1-5/16" on centers
- 2" x 3.5"
- KenCast technology
- 1.5" mounted



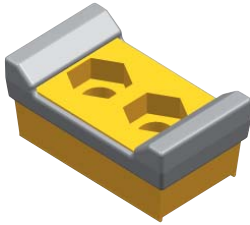
**“Kennametal carbide grinder tips have sliced our tool-replacement costs by almost 70%!”**

**Terry Kane, Owner**  
Georgia Mountain Grinding & Recycling  
Blairsville, Georgia

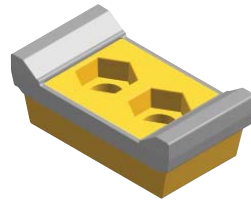
see fasteners on page 12

**Model**  
**TG-400 / 525**

**Part/Order Number** with Hammer Body  
**1855230**  
 • 2-bolt – 1-11/16" on centers  
 • 2.8" x 4.8"  
 • 6-side KenCoat overlay with rails


**Model**  
**TG-400 / 525 / 7000**

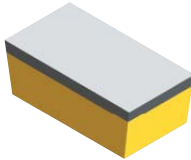
**Part/Order Number** with Hammer Body  
**2418497 (shown)**  
 • 2-bolt – 1-11/16" on centers  
 • 2.8" x 5.1"  
 • 6-side KenCoat overlay  
 • flat back  
**2434940**  
 • 2-bolt – 1-11/16" on centers  
 • 2.8" x 5.1"  
 • 8-side KenCoat overlay with face  
 • flat back


**Model**  
**TG-400 / 525**

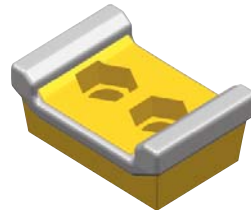
**Part/Order Number** with Hammer Body  
**2437966 Ripper**  
 • 2-bolt – 1-11/16" on centers  
 • 2.8" x 5.1"  
 • impact-resistant


**Model**  
**TG-400 / 525**

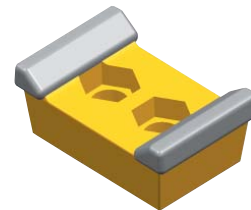
**Part/Order Number** with Hammer Body  
**2638852**  
 • 2-bolt – 1-11/16" on centers  
 • 2.5" x 4.8"  
 • KenCast technology solid face (threaded 3/4"-16 lugs in back)


**Model**  
**TG-800 / 1000 / 8000 / 9000**

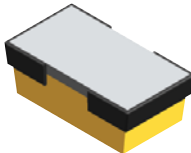
**Part/Order Number** with Hammer Body  
**1930338 (shown)**  
 • 2-bolt – 2" on centers  
 • 3.5" x 5.5"  
 • 6-side KenCoat overlay  
**2434936**  
 • 2-bolt – 2" on centers  
 • 3.5" x 5.5"  
 • 8-side KenCoat overlay with face


**Model**  
**TG-800 / 1000 / 8000 / 9000**

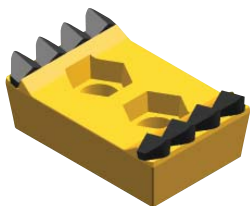
**Part/Order Number** with Hammer Body  
**1835079 (shown)**  
 • 2-bolt – 2" on centers  
 • 3.5" x 5.5"  
 • 4-side KenCoat overlay with corners  
**2993224**  
 • 2-bolt – 2" on centers  
 • 3.5" x 5.5"  
 • 4-side KenCoat overlay without corners


**Model**  
**TG-400 / 525**

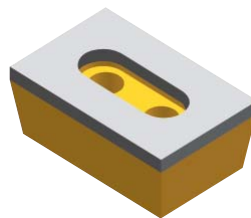
**Part/Order Number** with Hammer Body  
**3774512**  
 • 2-bolt – 1-11/16" on centers  
 • 2.8" x 5"  
 • KenCast technology with wraparound hardfacing


**Model**  
**TG-800 / 1000 / 8000 / 9000**

**Part/Order Number** with Hammer Body  
**2046932 Ripper (shown)**  
 • 2-bolt – 2" on centers  
 • 3.5" x 5.4"  
 • abrasion-resistant  
**2394828 Ripper**  
 • 2-bolt – 2" on centers  
 • 3.5" x 5.4"  
 • impact-resistant


**Model**  
**TG-800 / 1000 / 8000 / 9000**

**Part/Order Number** with Hammer Body  
**1981905**  
 • 2-bolt – 2" on centers  
 • 3.5" x 5.5"  
 • KenCast technology



see fasteners on page 12

Bandit

CBI / CMI /  
Rexworks / Norkot

Diamond Z / Hogzilla /  
W.H.O. / FHE

Duratech

Morbark

Peterson

Vermear

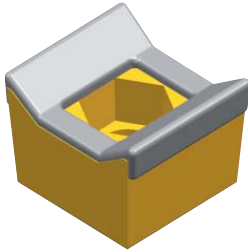
Precision Husky /  
Toro / Olathe

Packer / Rayco /  
FAE / ZEHR

**Model**  
837 / 867 / 1000 / 2000

**Part/Order Number**  
**1611573**

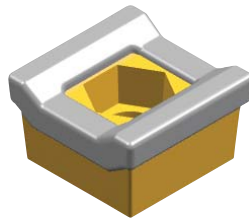
- 1-bolt
- 3" x 3"
- 6-side KenCoat overlay with face



**Model**  
837 / 867 / 1000 / 2000

**Part/Order Number**  
**2034217**

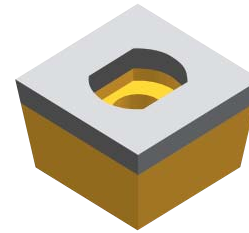
- 1-bolt
- 3" x 3"
- 8-side KenCoat overlay with face and sides



**Model**  
837 / 867 / 1000 / 2000

**Part/Order Number**  
**1313612 (MTO)**

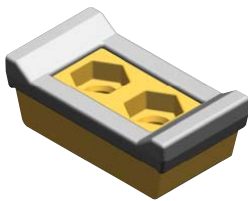
- 1-bolt
- 3" x 3"
- KenCast technology



**Model**  
4000 / 5000 / 5100

**Part/Order Number**  
**2434940 (shown)**

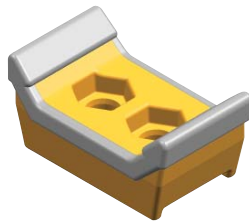
- 2-bolt – 1-11/16" on centers
- 2.8" x 5.1"
- 8-side KenCoat overlay with face
- flat back



**Model**  
4000 / 5000 / 5100

**Part/Order Number**  
**3645033 Knife Edge**

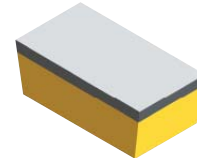
- 2-bolt – 1-11/16" on centers
- 2.8" x 4.8" x 2.1"
- 6-side KenCoat overlay with rails



**Model**  
4000 / 5000 / 5100

**Part/Order Number**  
**2638852**

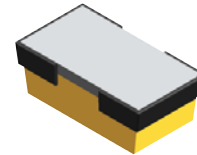
- 2-bolt – 1-11/16" on centers
- 2.5" x 4.8"
- KenCast technology solid face (threaded 3/4"-16 lugs in back)



**Model**  
4000 / 5000 / 5100

**Part/Order Number**  
**3774512**

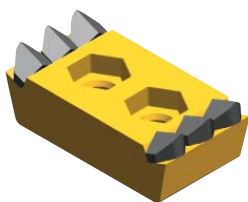
- 2-bolt – 1-11/16" on centers
- 2.8" x 5"
- KenCast technology with wraparound hardfacing



**Model**  
4000 / 5000 / 5100

**Part/Order Number**  
**2437966 Ripper**

- 2-bolt – 1-11/16" on centers
- 2.8" x 5.1"
- impact-resistant



Now offering premium quality fasteners for your grinders!

**EXPERIENCED STAFF!**

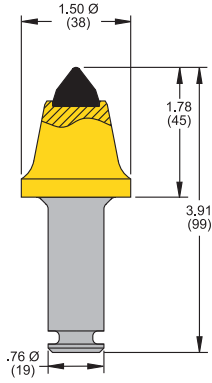
**FAST DELIVERY!**



Order from stock by Noon EST for same-day shipment.  
Call Customer Service at 800.458.3608 or 866.692.5434.

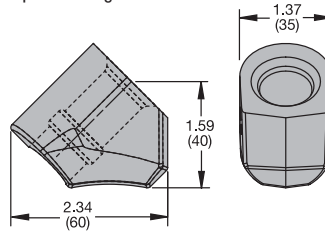
**Packer**

**Part/Order Number**  
**1010910 C3R Tool**  
 • for soft to medium or abrasive cutting conditions



**Packer**

**Part/Order Number**  
**1012278 C10 Block**  
 • for light-duty applications  
 • slim-profile design



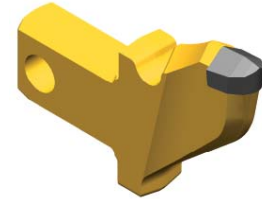
**Packer**

**Part/Order Number**  
**1012120 C3R Retainer**  
 • lock ring



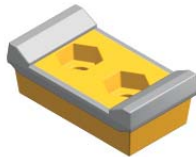
**Model**  
**Forestry Mowers**

**Part/Order Number**  
**1785758**  
 • mower tip assembly  
 • impact-resistant



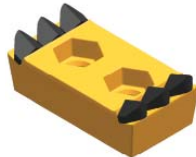
**ZEHR**

**Model**  
**4000**  
**Part/Order Number**  
**2271876**  
 • 2-bolt – 2" on centers  
 • 2.8" x 5.3"  
 • 6-side  
 KenCoat overlay  
 • flat back



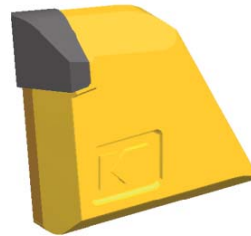
**ZEHR**

**Part/Order Number**  
**3127912 Ripper**  
 • 2-bolt – 2" on centers  
 • 2.7" x 5.1"  
 • impact-resistant  
 • flat back



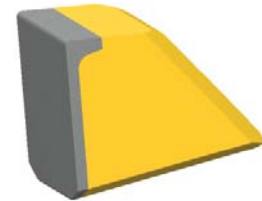
**Weld-On Accessories**

**Part/Order Number**  
**2882750 Shark Tooth**  
 • for drum rotors  
 • prevents material build-up on drum  
 • impact-resistant



**Weld-On Accessories**

**Part/Order Number**  
**2492967 Shark Tooth**  
 • for drum rotors  
 • for severe applications  
 • prevents material build-up on drum  
 • KenCast technology



**Weld-on wear protection!**

**ELIMINATES COSTLY HARDFACING!**



KenCast is an exclusive patented Kennametal product. We take tungsten carbide particles of varying sizes and metallurgically bond them to air-hardened steel. This combination of steel's durability with carbide's toughness creates a wear part that withstands extremely abrasive and high-impact applications.

KenCast helps your equipment last longer... in many cases, a lot longer depending on the application and operating conditions. That means you save money with reduced downtime, repair costs, and inventory. We keep our customers competitive and productive!

**Kennametal Inc. (USA)**

Mining and Construction Division  
Phone: 800.458.3608

**Kennametal Australia Pty. Ltd.**

Phone: (61) 7 3801 5844

**Kennametal Inc. (Canada)**

Phone: 800.458.3608

**Kennametal Xuzhou Ltd. (Beijing)**

Representative Office Phone: (86) 10 8563 4883

**Kennametal Inc. (France)**

Phone: (33) 387 8965 93

**Kennametal GmbH & Co. KG (Europe)**

Phone: (49) 6172 28 52 20

**Kennametal Japan Ltd. (Tokyo)**

Phone: (81) 3 3820 2855

**Kennametal Korea Ltd.**

Phone: (82) 2 2109 6100

**Kennametal (Malaysia) Sdn. Bhd.**

Phone: (6) 03 5569 9080

**Kennametal Sp. z O.O. (Poland)**

Phone: (48) 32 739 4352

**Kennametal (Singapore) Pte. Ltd.**

Phone: (65) 6 265 9222

**Kennametal South Africa Pty. Ltd.**

Phone: (27) 11 397 3540

**Kennametal Hardpoint Taiwan Inc.**

Phone: (886) 2 2523 3660

**Kennametal (Thailand) Co. Ltd.**

Phone: (662) 377 1501

# Grinder Tips

**Kennametal**

The proven global leader in the design, manufacture, implementation, and sale of premium-quality tooling systems for underground and surface mining, road rehabilitation, aggregates production, and waste recycling!

**Engineering and Customer Support Hours:  
8am to 7pm EST**

**Customer Service:  
800.458.3608 (USA and Canada)  
866.692.5434 (USA only)**

[www.kennametal.com](http://www.kennametal.com)



Kennametal Inc.  
1600 Technology Way | Latrobe, PA 15650 USA

Kennametal, the stylized K, KenCast, and KenCoat are trademarks of Kennametal Inc., and are used as such herein. Bandit, CBI, CMI, Rexworks, Norkot, Diamond Z, Hogzilla, W.H.O., FHE, Duratech, Morbark, Peterson, Vermeer, Precision Husky, Toro, Olathe, Packer, Rayco, FAE, and ZEHR are registered trademarks of their respective owners and are used as such herein.

©2009 Kennametal Inc. | All rights reserved. | Printed in the USA. | B-09-02049