

Driven Tools (Mori Seiki Series)



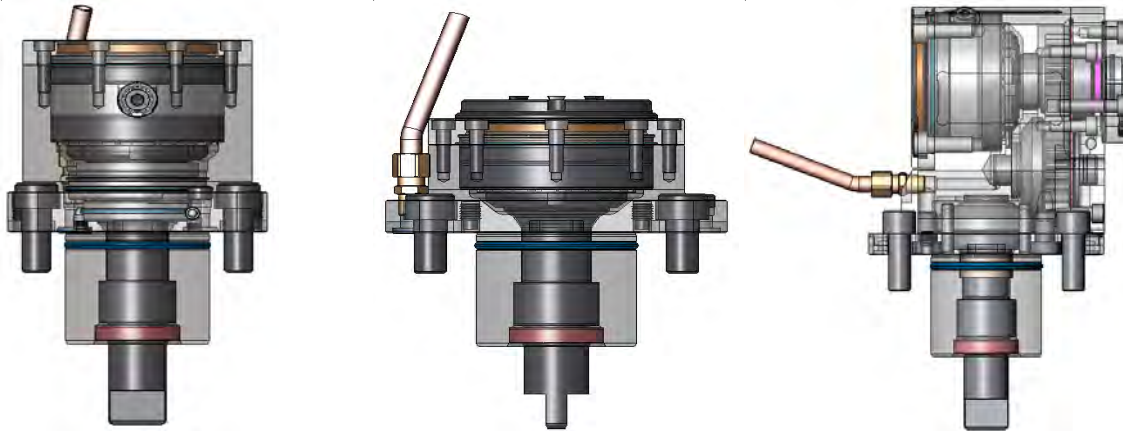


TABLE OF CONTENTS

			PAGE(S)
DESIGN AND BENEFITS			3
MORI MACHINE	MODEL(S)	TOOL AXIS	
NL SERIES (MC SPEC.)	NL1500MC,NL1500SMC,NL1500SY NL2000MC,NL2000SMC,NL2000Y,NL2000SY NL2500MC,NL2500SMC,NL2500Y,NL2500SY NL3000MC,NL3000Y	STRAIGHT	4 - 11
		RIGHT ANGLE	12 - 17
NT SERIES	NT3100DCG/500CZ, NT3100DCG/1000Z, NT3100DCG/1000SZ NT3150DCG/500CZ, NT3150DCG/1000Z, NT3150DCG/1000SZ NT3200DCG/500CZ, NT3200DCG/1000Z, NT3200DCG/1000SZ NT4200DCG/700CZ, NT4200DCG/1000Z, NT4200DCG/1000SZ, NT4200DCG/1500Z, NT4200DCG/1500SZ NT4250DCG/700CZ, NT4250DCG/1000Z, NT4250DCG/1000SZ, NT4250DCG/1500Z, NT4250DCG/1500SZ NT4300DCG/700CZ, NT4300DCG/1000Z, NT4300DCG/1000SZ, NT4300DCG/1500Z, NT4300DCG/1500SZ NT5400DCG/1200CZ, NT5400DCG/1800Z, NT5400DCG/1800SZ	STRAIGHT	4 - 11
		RIGHT ANGLE	12 - 17
PARTS & ACCESSORIES			18
MODEL CODES			19



DESIGN & BENEFITS



-
-
-
-
-
-
-
-
-
-
-
-
-
-
-
-
-
-
-
-
-
-
-
-
-
-
-
-
-
-
-
-
-
-
-
-
-
-
-
-
-
-
-
-
-
-
-
-
-
-
-
-
-
-
-
-
-
-
-
-
-
-
-
-
-
-
-
-
-
-
-
-
-
-
-
-
-
-
-
-
-
-
-
-
-
-



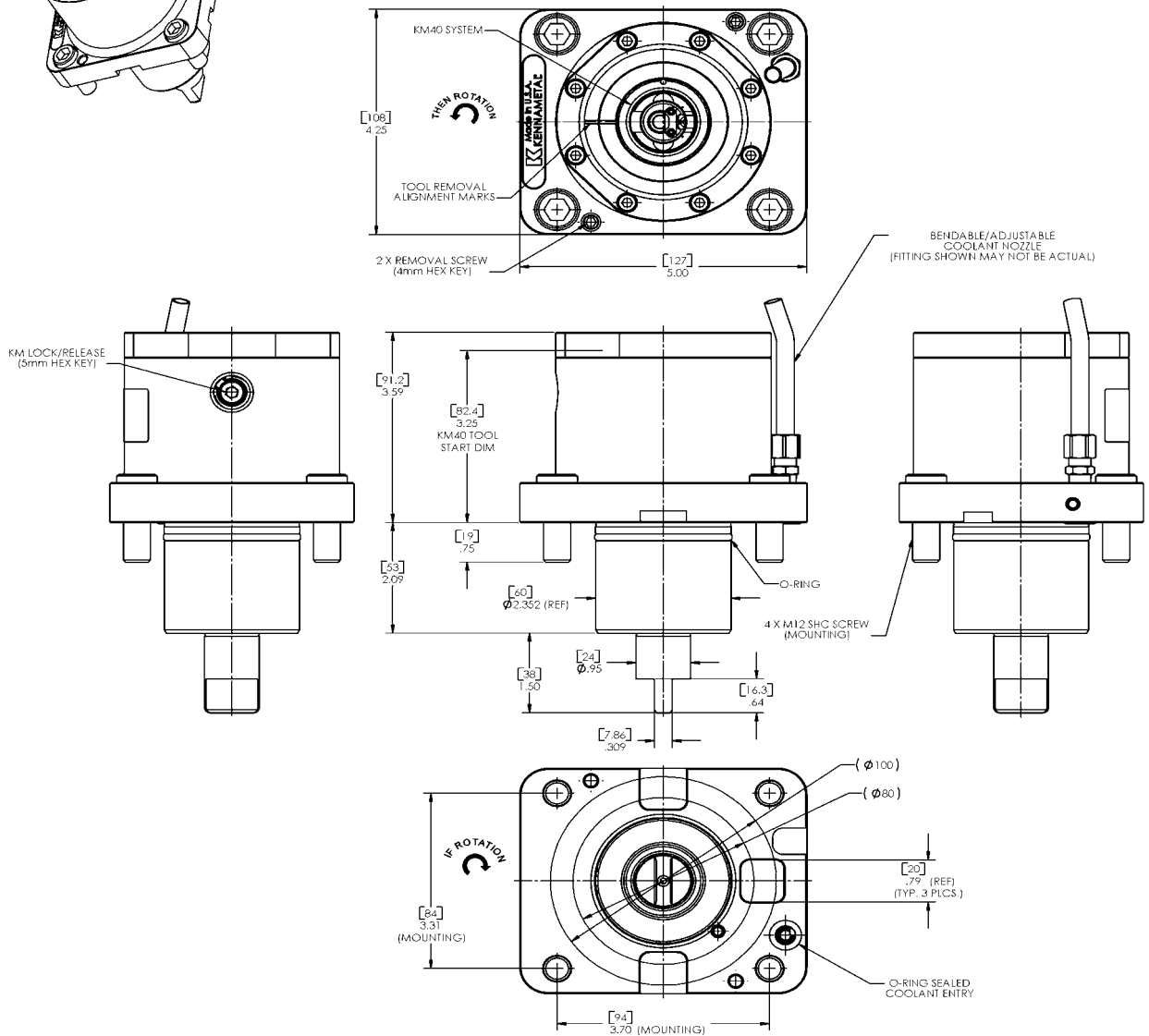
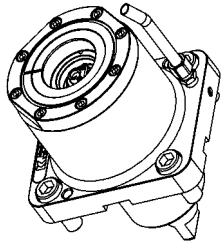
NL SERIES (MC SPECIFICATION)

NL1500, NL2000, NL2500, NL3000
 NT3100, NT3150, NT3200, NT4200, NT4250, NT4300, NT5400

STANDARD TOOL OPTIONS

Part No	Tool Axis	Gear Ratio	Clamping System	Coolant Supply	Rotation
DT10610602721	Straight	1:1	KM-40	internal / external	CW (in) CCW (out)

*TOOLS ALSO AVAILABLE WITH OPTION: EXTERNAL COOLANT SUPPLY ONLY



GENERAL PERFORMANCE SPECIFICATIONS

WEIGHT	AXIAL LOAD	INPUT SPEED	INTERNAL COOLANT	SPINDLE RUNOUT (TIR)	SPINDLE SQUARENESS
14.5 lbs. (6.5 kg)	580 lbf. (2.6 kN) [6,000 Hours L10 @ 4,500 RPM]	6,000 RPM	1,500 PSI (103.4 bar)	0.0008" @ 2.0" (0.02mm @ 50mm)	0.0008" @ 2.0" (0.02mm @ 50mm)

SPECIALS AVAILABLE UPON REQUEST



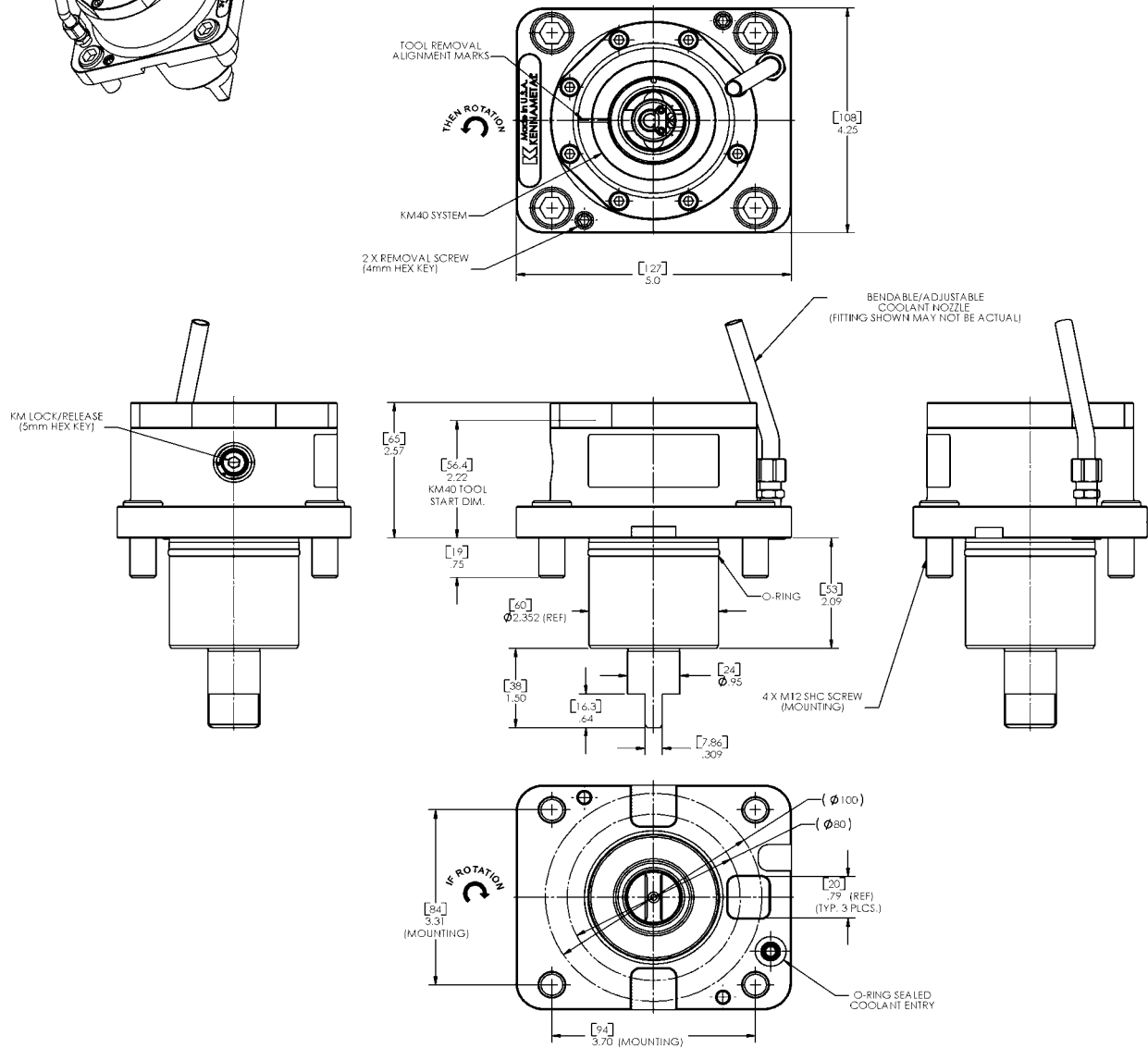
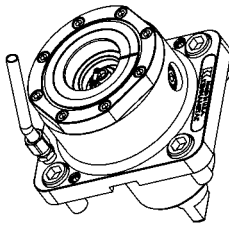
NL SERIES (MC SPECIFICATION)

NL1500, NL2000, NL2500, NL3000
NT3100, NT3150, NT3200, NT4200, NT4250, NT4300, NT5400

STANDARD TOOL OPTIONS

Part No	Tool Axis	Gear Ratio	Clamping System	Coolant Supply	Rotation
DT10610602711	Straight	1:1	KM-40	external	CW (in) CCW (out)

*TOOLS ALSO AVAILABLE WITH OPTION: INTERNAL / EXTERNAL COOLANT SUPPLY



GENERAL PERFORMANCE SPECIFICATIONS

WEIGHT	AXIAL LOAD	INPUT SPEED	INTERNAL COOLANT	SPINDLE RUNOUT (TIR)	SPINDLE SQUARENESS
11.0 lbs. (5.0 kg)	580 lbf. (2.6 kN) [6,000 Hours L10 @ 4,500 RPM]	6,000 RPM	N.A.	0.0008" @ 2.0" (0.02mm @ 50mm)	0.0008" @ 2.0" (0.02mm @ 50mm)

SPECIALS AVAILABLE UPON REQUEST



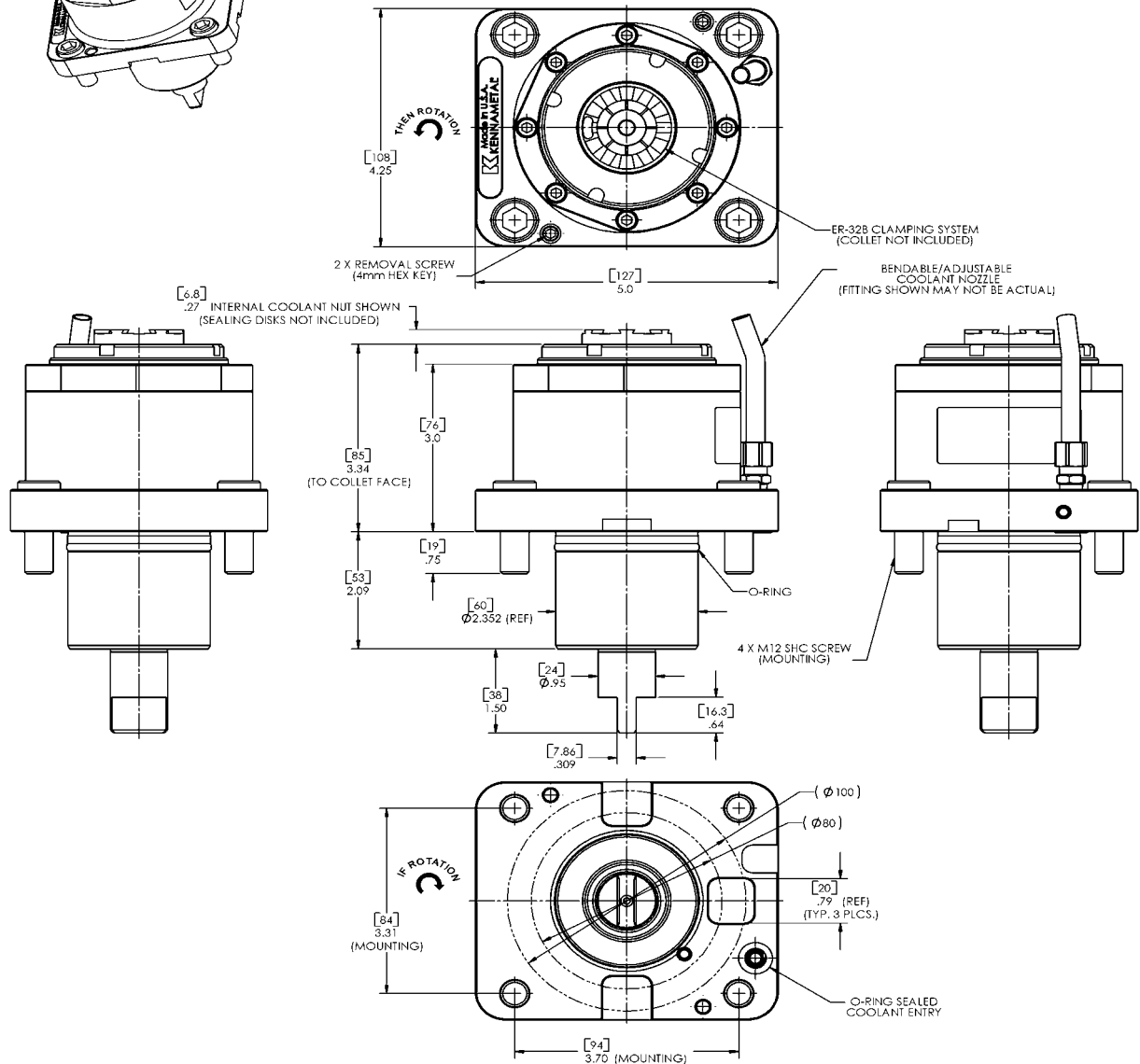
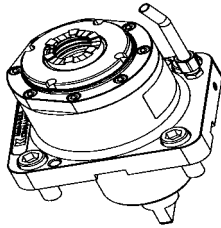
NL SERIES (MC SPECIFICATION)

NL1500, NL2000, NL2500, NL3000
 NT3100, NT3150, NT3200, NT4200, NT4250, NT4300, NT5400

STANDARD TOOL OPTIONS

Part No	Tool Axis	Gear Ratio	Clamping System	Coolant Supply	Rotation
DT10611402721	Straight	1:1	ER-32	internal / external	CW (in) CCW (out)

*TOOLS ALSO AVAILABLE WITH OPTION: EXTERNAL COOLANT SUPPLY ONLY



GENERAL PERFORMANCE SPECIFICATIONS

WEIGHT	AXIAL LOAD	INPUT SPEED	INTERNAL COOLANT	SPINDLE RUNOUT (TIR)	SPINDLE SQUARENESS
13.5 lbs. (6.1 kg)	580 lbf. (2.6 kN) [6,000 Hours L10 @ 4,500 RPM]	6,000 RPM	1,500 PSI (103.4 bar)	0.0008" @ 2.0" (0.02mm @ 50mm)	0.0008" @ 2.0" (0.02mm @ 50mm)

SPECIALS AVAILABLE UPON REQUEST



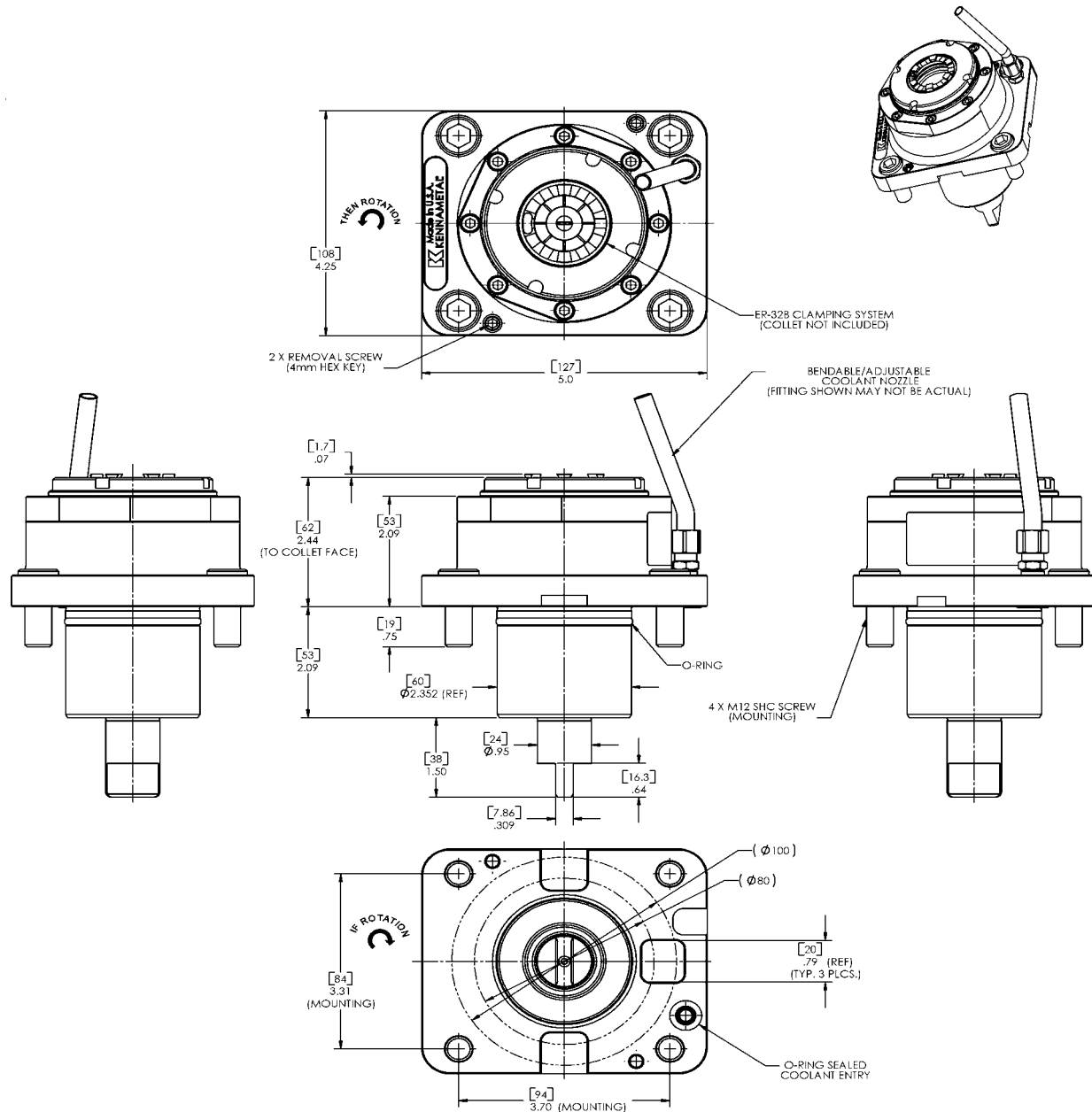
NL SERIES (MC SPECIFICATION)

NL1500, NL2000, NL2500, NL3000
NT3100, NT3150, NT3200, NT4200, NT4250, NT4300, NT5400

STANDARD TOOL OPTIONS

Part No	Tool Axis	Gear Ratio	Clamping System	Coolant Supply	Rotation
DT10611402711	Straight	1:1	ER-32	external	CW (in) CCW (out)

*TOOLS ALSO AVAILABLE WITH OPTION: INTERNAL / EXTERNAL COOLANT SUPPLY



GENERAL PERFORMANCE SPECIFICATIONS

WEIGHT	AXIAL LOAD	INPUT SPEED	INTERNAL COOLANT	SPINDLE RUNOUT (TIR)	SPINDLE SQUARENESS
10.5 lbs. (4.8 kg)	580 lbf. (2.6 kN) [6,000 Hours L10 @ 4,500 RPM]	6,000 RPM	N.A.	0.0008" @ 2.0" (0.02mm @ 50mm)	0.0008" @ 2.0" (0.02mm @ 50mm)

SPECIALS AVAILABLE UPON REQUEST



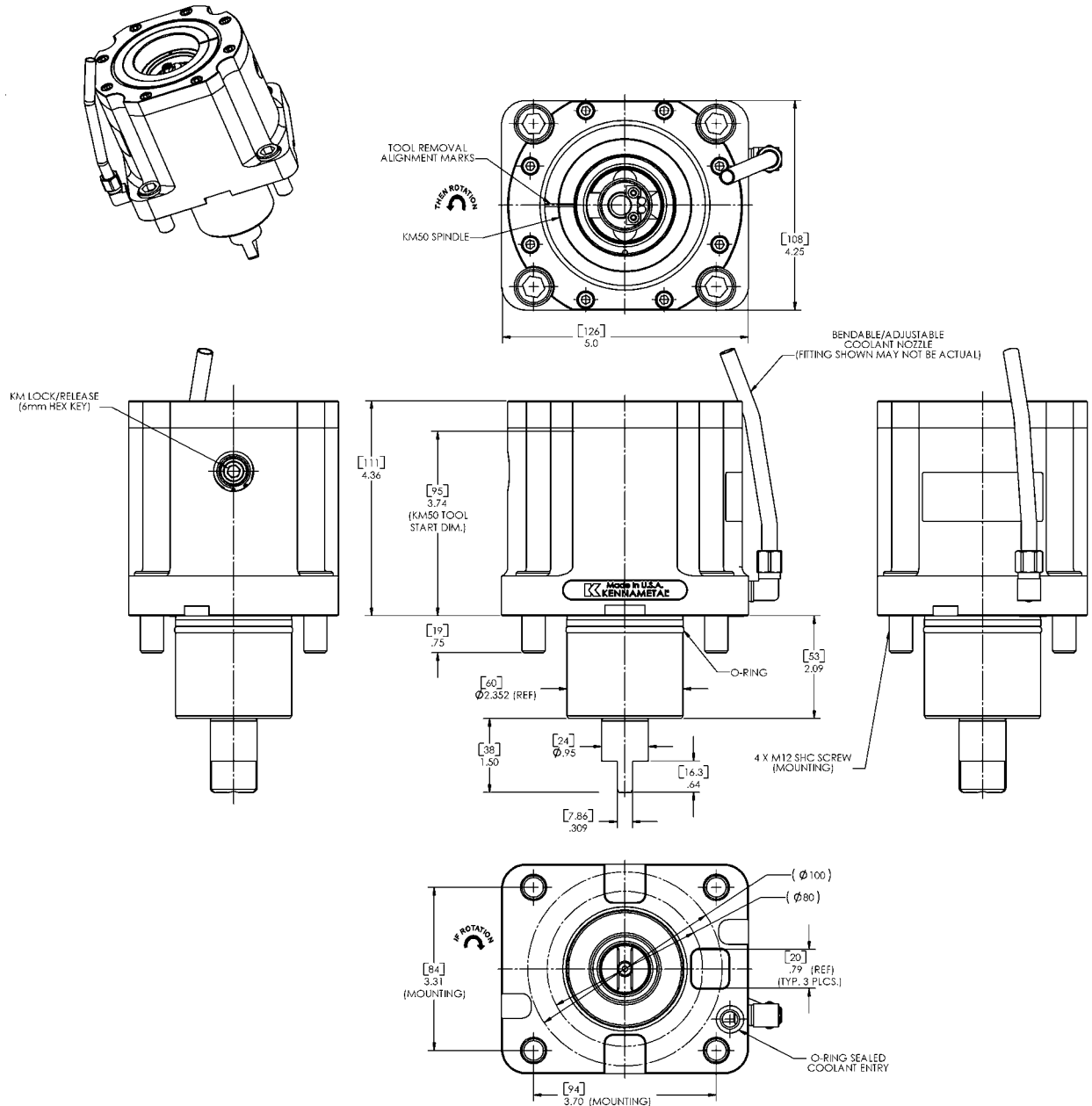
NL SERIES (MC SPECIFICATION)

NL1500, NL2000, NL2500, NL3000
 NT3100, NT3150, NT3200, NT4200, NT4250, NT4300, NT5400

STANDARD TOOL OPTIONS

Part No	Tool Axis	Gear Ratio	Clamping System	Coolant Supply	Rotation
DT10610502721	Straight	1:1	KM-50	internal / external	CW (in) CCW (out)

*TOOLS ALSO AVAILABLE WITH OPTION: EXTERNAL COOLANT SUPPLY ONLY



GENERAL PERFORMANCE SPECIFICATIONS

WEIGHT	AXIAL LOAD	INPUT SPEED	INTERNAL COOLANT	SPINDLE RUNOUT (TIR)	SPINDLE SQUARENESS
20.0 lbs. (9.0 kg)	580 lbf. (2.6 kN) [6,000 Hours L10 @ 4,500 RPM]	6,000 RPM	1,500 PSI (103.4 bar)	0.0008" @ 2.0" (0.02mm @ 50mm)	0.0008" @ 2.0" (0.02mm @ 50mm)

SPECIALS AVAILABLE UPON REQUEST



NL SERIES (MC SPECIFICATION)

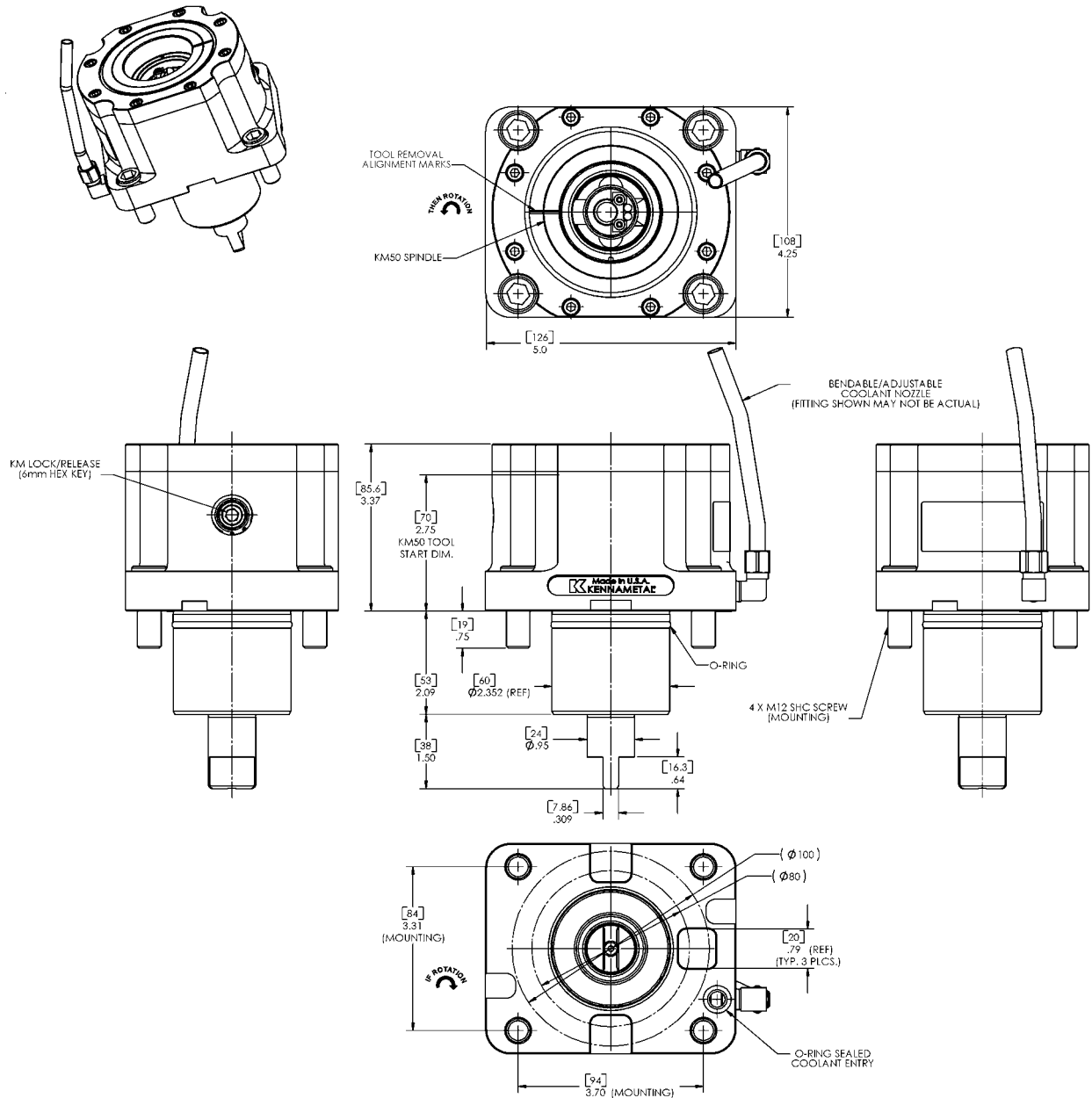
NL1500, NL2000, NL2500, NL3000
NT3100, NT3150, NT3200, NT4200, NT4250, NT4300, NT5400

Driven Tools (Mori Seiki Series)

STANDARD TOOL OPTIONS

Part No	Tool Axis	Gear Ratio	Clamping System	Coolant Supply	Rotation
DT10610502721	Straight	1:1	KM-50	internal / external	CW (in) CCW (out)

*TOOLS ALSO AVAILABLE WITH OPTION: EXTERNAL COOLANT SUPPLY ONLY



GENERAL PERFORMANCE SPECIFICATIONS

WEIGHT	AXIAL LOAD	INPUT SPEED	INTERNAL COOLANT	SPINDLE RUNOUT (TIR)	SPINDLE SQUARENESS
16.0 lbs. (7.5 kg)	580 lbf. (2.6 kN) [6,000 Hours L10 @ 4,500 RPM]	6,000 RPM	1,500 PSI (103.4 bar)	0.0008" @ 2.0" (0.02mm @ 50mm)	0.0008" @ 2.0" (0.02mm @ 50mm)

SPECIALS AVAILABLE UPON REQUEST



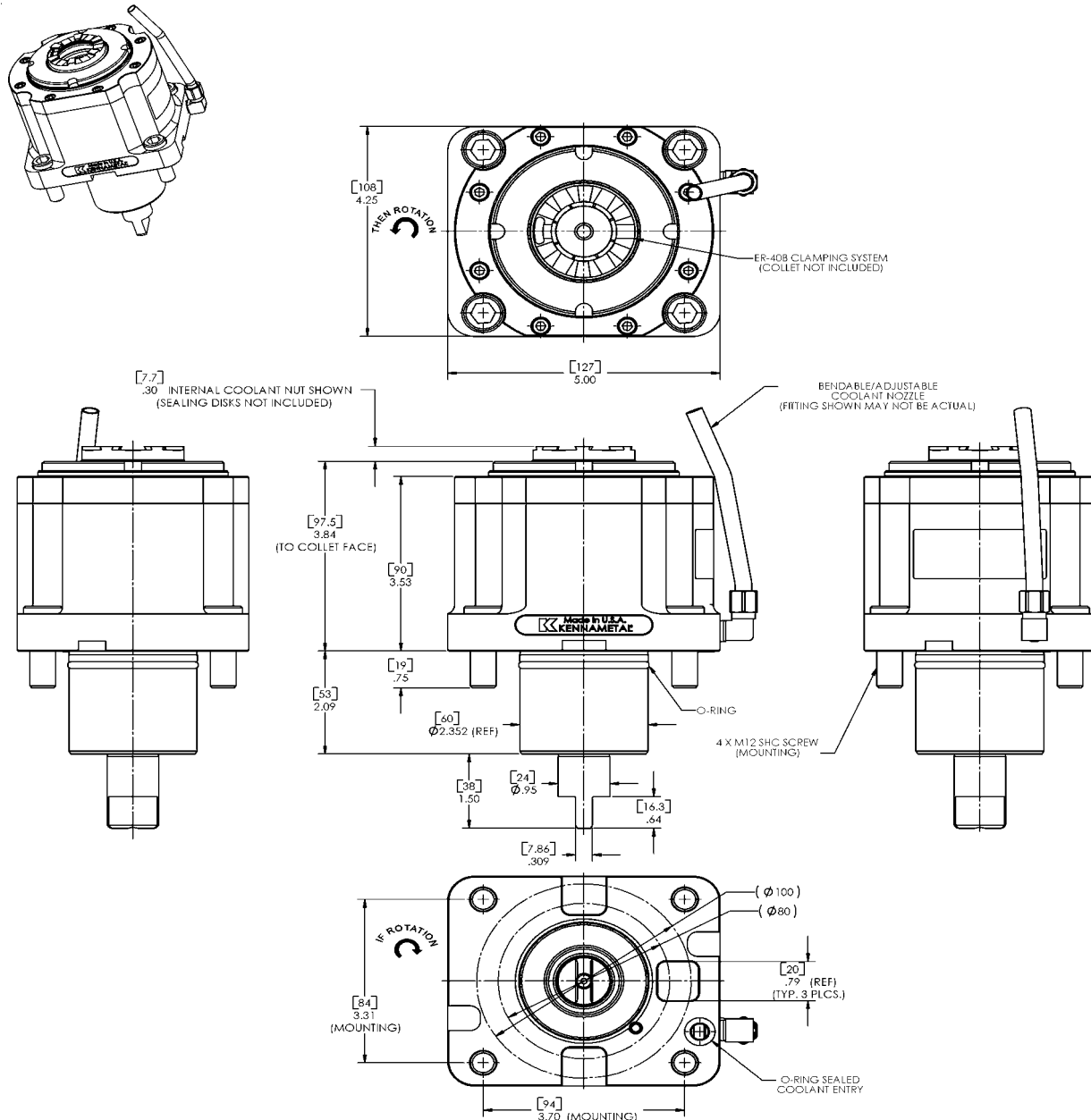
NL SERIES (MC SPECIFICATION)

NL1500, NL2000, NL2500, NL3000
 NT3100, NT3150, NT3200, NT4200, NT4250, NT4300, NT5400

STANDARD TOOL OPTIONS

Part No	Tool Axis	Gear Ratio	Clamping System	Coolant Supply	Rotation
DT10611502721	Straight	1:1	ER-40	internal / external	CW (in) CCW (out)

*TOOLS ALSO AVAILABLE WITH OPTION: EXTERNAL COOLANT SUPPLY ONLY



GENERAL PERFORMANCE SPECIFICATIONS

WEIGHT	AXIAL LOAD	INPUT SPEED	INTERNAL COOLANT	SPINDLE RUNOUT (TIR)	SPINDLE SQUARENESS
18.5 lbs. (8.4 kg)	580 lbf. (2.6 kN) [6,000 Hours L10 @ 4,500 RPM]	6,000 RPM	1,500 PSI (103.4 bar)	0.0008" @ 2.0" (0.02mm @ 50mm)	0.0008" @ 2.0" (0.02mm @ 50mm)

SPECIALS AVAILABLE UPON REQUEST



Driven Tools (Mori Seiki Series)

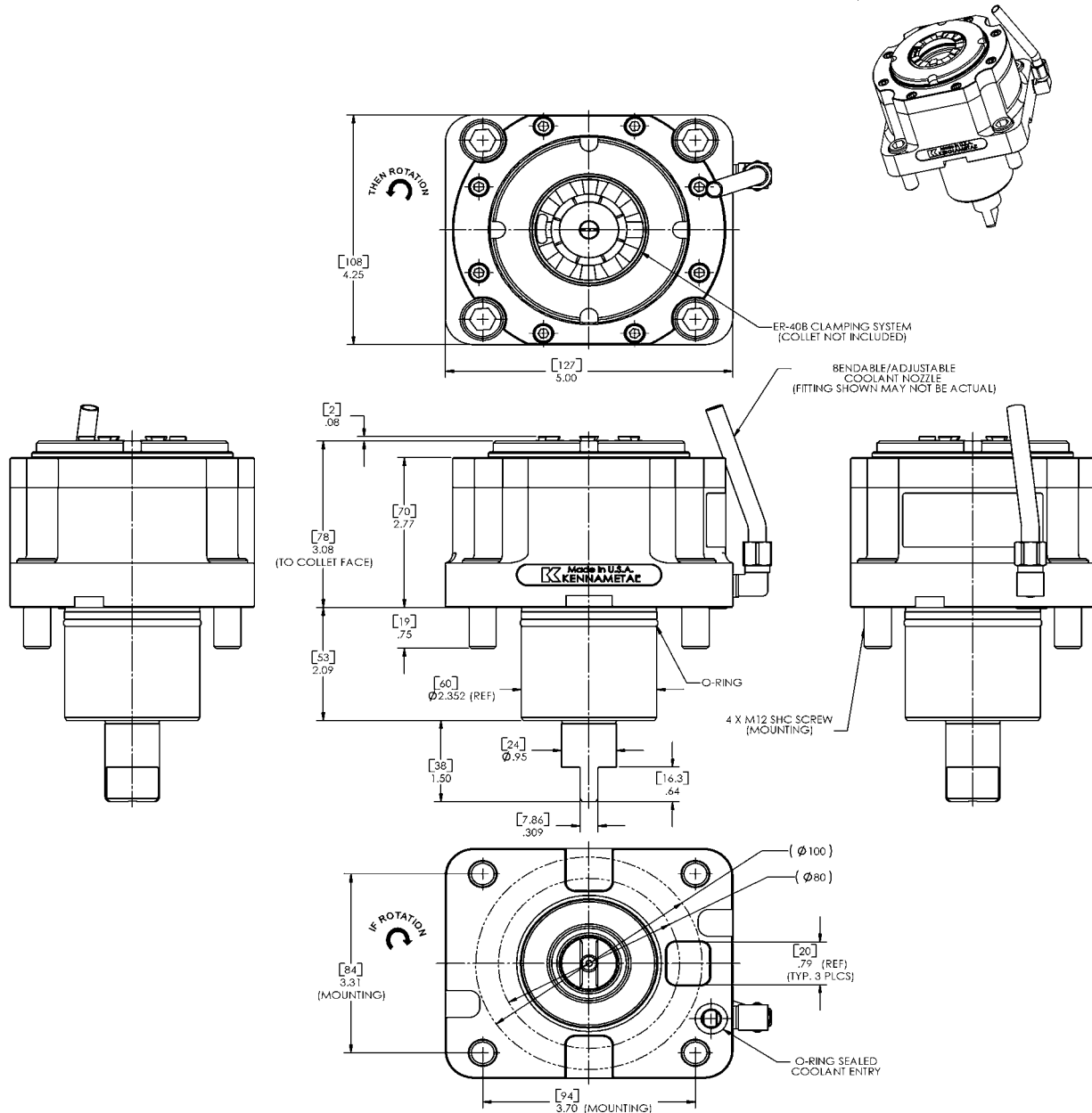
NL SERIES (MC SPECIFICATION)

NL1500, NL2000, NL2500, NL3000
NT3100, NT3150, NT3200, NT4200, NT4250, NT4300, NT5400

STANDARD TOOL OPTIONS

Part No	Tool Axis	Gear Ratio	Clamping System	Coolant Supply	Rotation
DT10611502711	Straight	1:1	ER-40	external	CW (in) CCW (out)

*TOOLS ALSO AVAILABLE WITH OPTION: INTERNAL / EXTERNAL COOLANT SUPPLY



GENERAL PERFORMANCE SPECIFICATIONS

WEIGHT	AXIAL LOAD	INPUT SPEED	INTERNAL COOLANT	SPINDLE RUNOUT (TIR)	SPINDLE SQUARENESS
15.5 lbs. (7.0 kg)	580 lbf. (2.6 kN) [6,000 Hours L10 @ 4,500 RPM]	6,000 RPM	N.A.	0.0008" @ 2.0" (0.02mm @ 50mm)	0.0008" @ 2.0" (0.02mm @ 50mm)

SPECIALS AVAILABLE UPON REQUEST



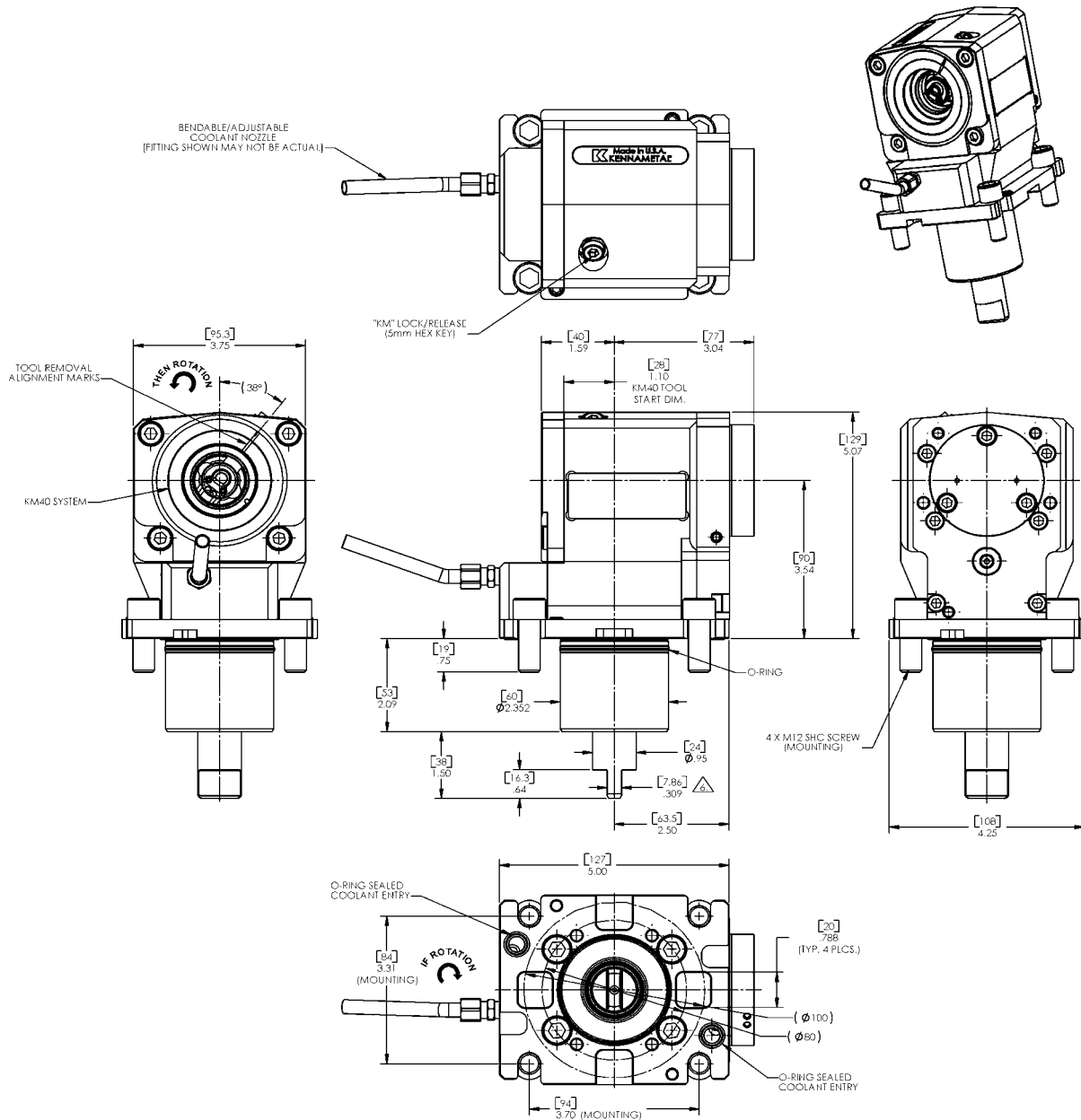
NL SERIES (MC SPECIFICATION)

NL1500, NL2000, NL2500, NL3000
NT3100, NT3150, NT3200, NT4200, NT4250, NT4300, NT5400

STANDARD TOOL OPTIONS

Part No	Tool Axis	Gear Ratio	Clamping System	Coolant Supply	Rotation
DT10210602711	Right Angle	1:1	KM-40	external	CW (in) CCW (out)
DT10210602721	Right Angle	1:1	KM-40	internal / external	CW (in) CCW (out)

*TOOLS ALSO AVAILABLE WITH OPTIONS: GEAR RATIO 1:2, GEAR RATIO 2:1



GENERAL PERFORMANCE SPECIFICATIONS

WEIGHT	AXIAL LOAD	INPUT SPEED	INTERNAL COOLANT	SPINDLE RUNOUT (TIR)	SPINDLE SQUARENESS
22.0 lbs. (10.0 kg)	480 lbf. (2.1 kN) [6,000 Hours L10 @ 4,500 RPM]	6,000 RPM	1,500 PSI (103.4 bar)	0.0008" @ 2.0" (0.02mm @ 50mm)	0.0008" @ 2.0" (0.02mm @ 50mm)

SPECIALS AVAILABLE UPON REQUEST

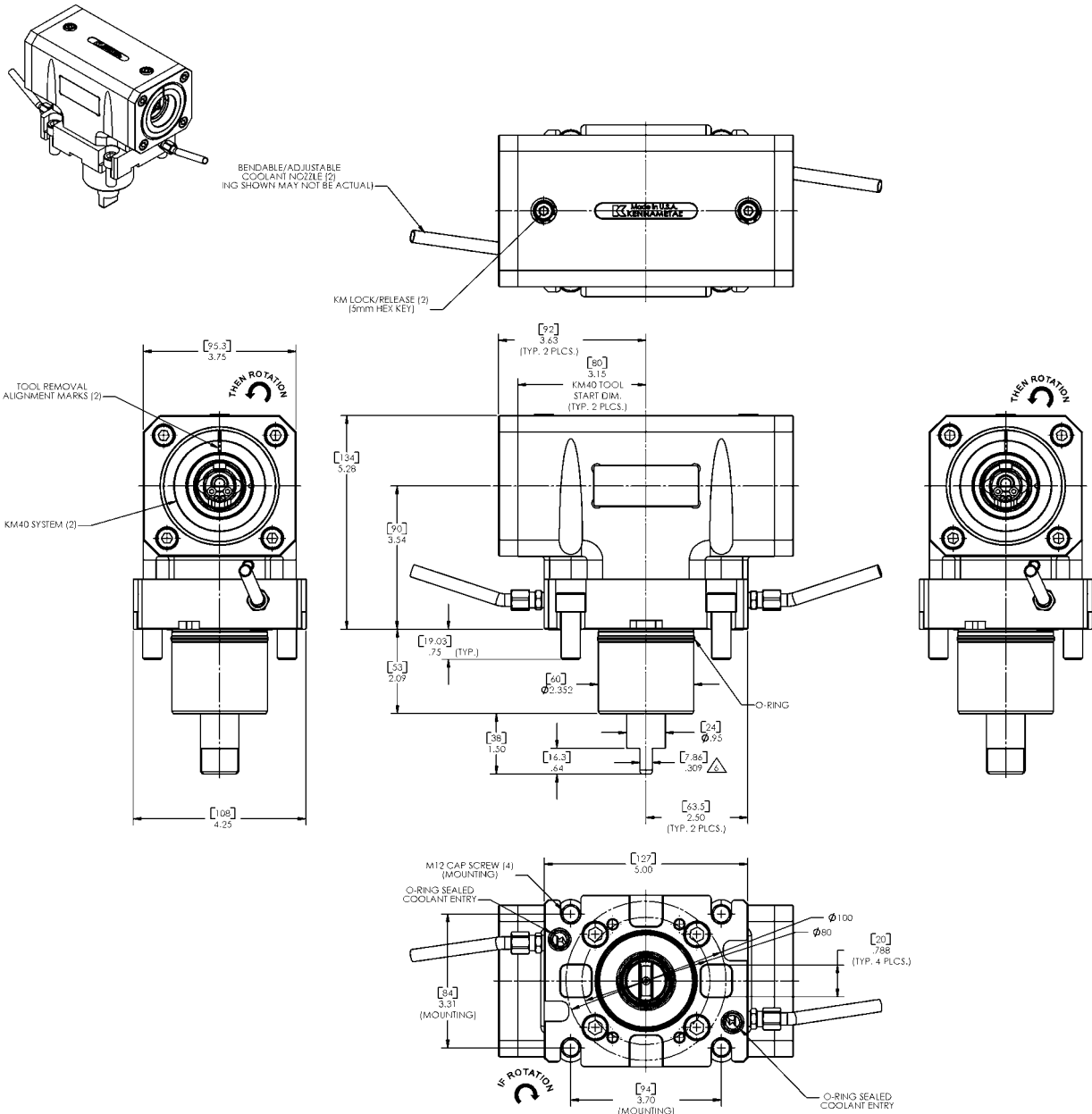


NL SERIES (MC SPECIFICATION)

NL1500, NL2000, NL2500, NL3000
NT3100, NT3150, NT3200, NT4200, NT4250, NT4300, NT5400

STANDARD TOOL OPTIONS

Part No	Tool Axis	Gear Ratio	Clamping System	Coolant Supply	Rotation
DT10510602711	Right Angle - Dual Spindle	1:1	KM-40	external	CW (in) CCW (out)
DT10510602721	Right Angle - Dual Spindle	1:1	KM-40	internal / external	CW (in) CCW (out)



GENERAL PERFORMANCE SPECIFICATIONS

WEIGHT	AXIAL LOAD	INPUT SPEED	INTERNAL COOLANT	SPINDLE RUNOUT (TIR)	SPINDLE SQUARENESS
32.3 lbs. (14.7 kg)	480 lbf. (2.1 kN) [6,000 Hours L10 @ 4,500 RPM]	6,000 RPM	N.A.	0.0008" @ 2.0" (0.02mm @ 50mm)	0.0008" @ 2.0" (0.02mm @ 50mm)

SPECIALS AVAILABLE UPON REQUEST



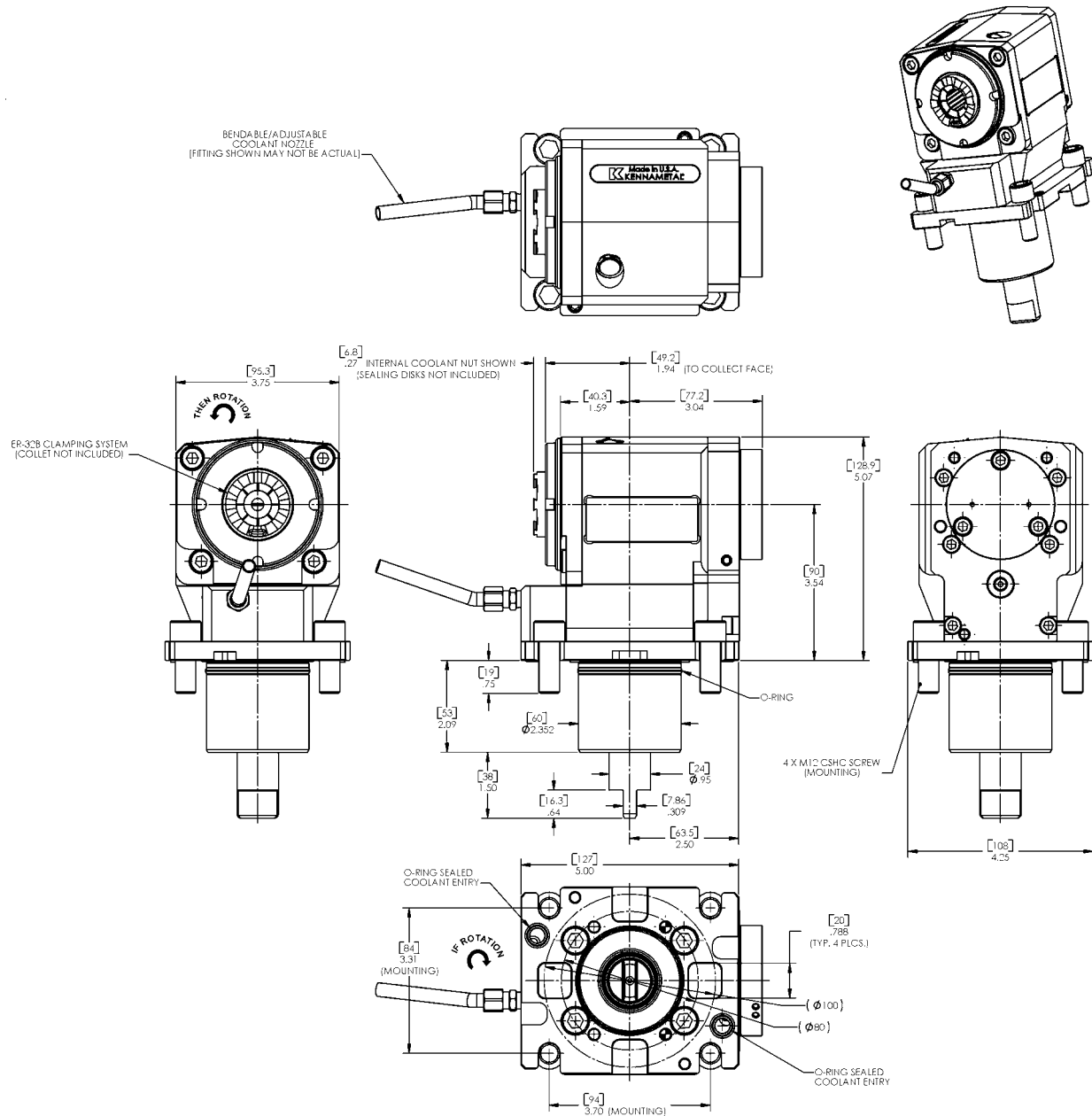
NL SERIES (MC SPECIFICATION)

NL1500, NL2000, NL2500, NL3000
 NT3100, NT3150, NT3200, NT4200, NT4250, NT4300, NT5400

STANDARD TOOL OPTIONS

Part No	Tool Axis	Gear Ratio	Clamping System	Coolant Supply	Rotation
DT10211402711	Right Angle	1:1	ER-32	external	CW (in) CCW (out)
DT10211402721	Right Angle	1:1	ER-32	internal / external	CW (in) CCW (out)

*TOOLS ALSO AVAILABLE WITH OPTIONS: GEAR RATIO 1:2, GEAR RATIO 2:1



GENERAL PERFORMANCE SPECIFICATIONS

WEIGHT	AXIAL LOAD	INPUT SPEED	INTERNAL COOLANT	SPINDLE RUNOUT (TIR)	SPINDLE SQUARENESS
22.1 lbs. (10.0 kg)	480 lbf. (2.1 kN) [6,000 Hours L10 @ 4,500 RPM]	6,000 RPM	1,500 PSI (103.4 bar)	0.0008" @ 2.0" (0.02mm @ 50mm)	0.0008" @ 2.0" (0.02mm @ 50mm)

SPECIALS AVAILABLE UPON REQUEST



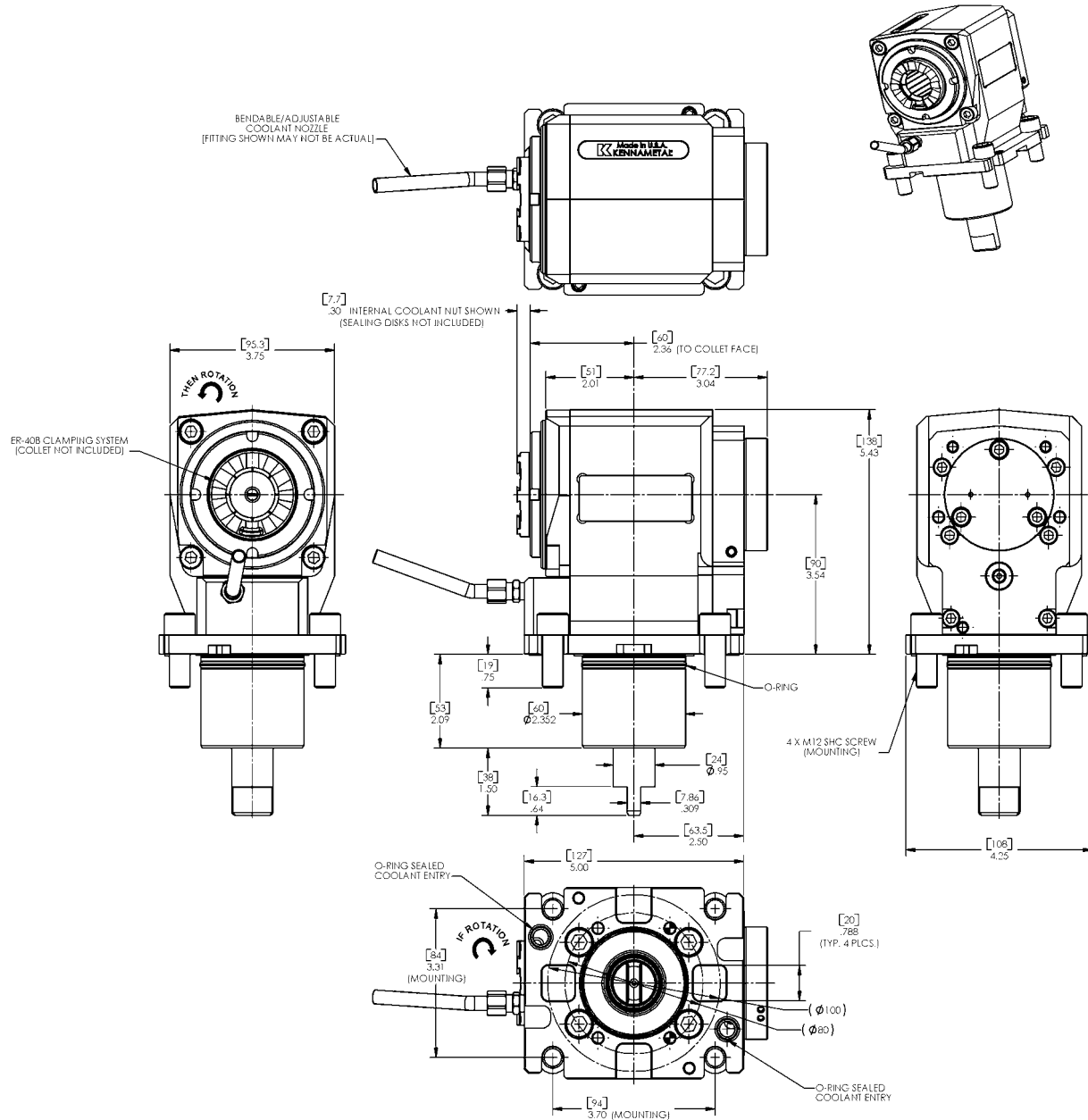
NL SERIES (MC SPECIFICATION)

NL1500, NL2000, NL2500, NL3000
NT3100, NT3150, NT3200, NT4200, NT4250, NT4300, NT5400

STANDARD TOOL OPTIONS

Part No	Tool Axis	Gear Ratio	Clamping System	Coolant Supply	Rotation
DT10211502711	Right Angle	1:1	ER-40	external	CW (in) CCW (out)
DT10211502721	Right Angle	1:1	ER-40	internal / external	CW (in) CCW (out)

*TOOLS ALSO AVAILABLE WITH OPTIONS: GEAR RATIO 1:2, GEAR RATIO 2:1



GENERAL PERFORMANCE SPECIFICATIONS

WEIGHT	AXIAL LOAD	INPUT SPEED	INTERNAL COOLANT	SPINDLE RUNOUT (TIR)	SPINDLE SQUARENESS
24.2 lbs. (11.0 kg)	480 lbf. (2.1 kN) [6,000 Hours L10 @ 4,500 RPM]	6,000 RPM	1,500 PSI (103.4 bar)	0.0008" @ 2.0" (0.02mm @ 50mm)	0.0008" @ 2.0" (0.02mm @ 50mm)

SPECIALS AVAILABLE UPON REQUEST



PARTS & ACCESSORIES

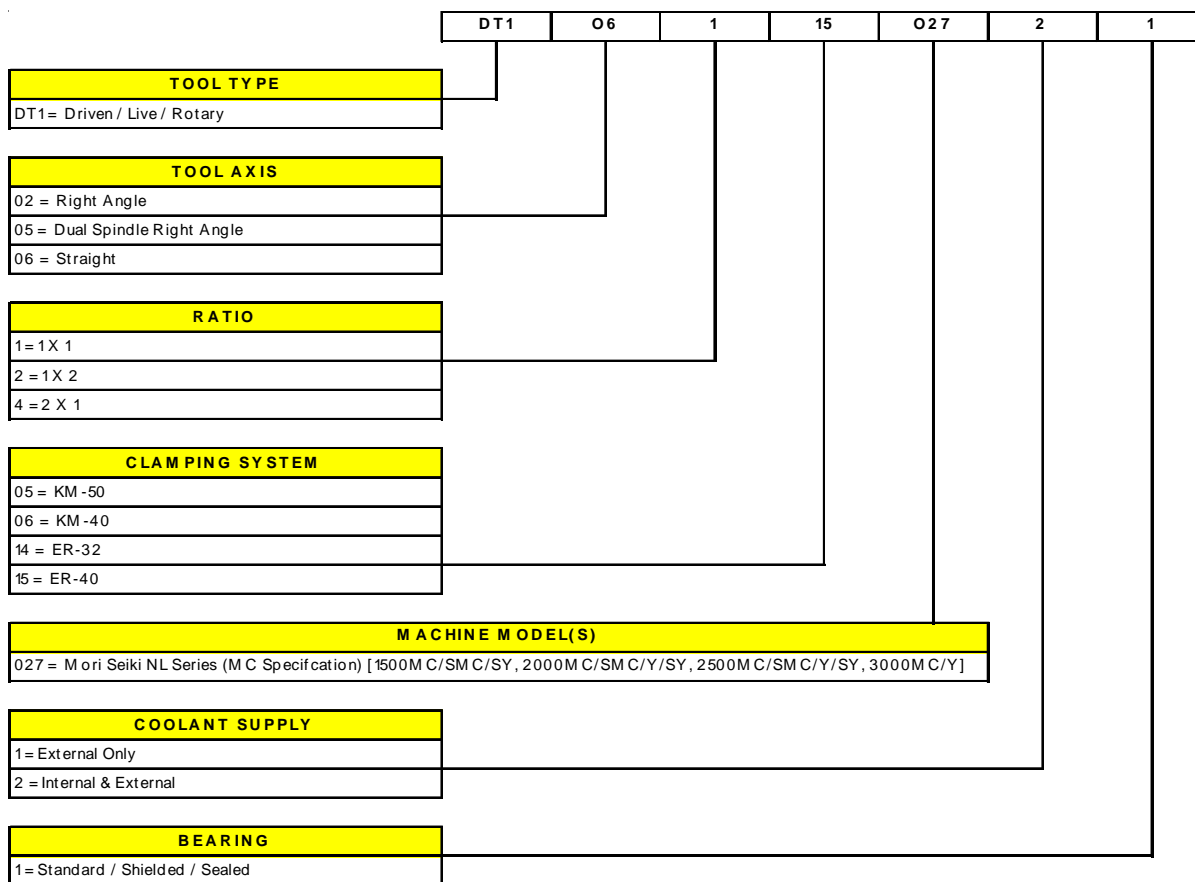


TOOL TYPE	SPINDLE	WRENCH (NUT)	WRENCH (SPINDLE)	WRENCH (SPINDLE)	ER NUT	KM KIT	O-RING (COOLANT)	O-RING (POST)	SCREWS (4)	PLUNGER KIT	ACCESS PLUG KIT
RA - ICL	ER-32	80433	80080	80685	80432	-----	80118	80658	80664	-----	-----
RA - ECL	ER-32	80433	80080	80685	80431	-----	80118	80658	80664	-----	-----
SS - ICL	ER-32	80433	80080	80712	80432	-----	80118	80658	80664	-----	-----
SS - ECL	ER-32	80433	80080	80712	80431	-----	80118	80658	80665	-----	-----
RA - ICL	ER-40	80436	80191	80720	80435	-----	80118	80658	80664	-----	-----
RA - ECL	ER-40	80436	80191	80720	80434	-----	80118	80658	80664	-----	-----
SS - ICL	ER-40	80436	80191	80713	80435	-----	80118	80658	80664	-----	-----
SS - ECL	ER-40	80436	80191	80713	80434	-----	80118	80658	80664	-----	-----
RA - ICL	KM-40	-----	-----	-----	-----	80502-1	80118	80658	80664	80373-1	80781-1
RA - ECL	KM-40	-----	-----	-----	-----	80502-1	80118	80658	80664	80373-1	80781-1
SS - ICL	KM-40	-----	-----	-----	-----	80502-1	80118	80658	80664	80373-1	80781-1
SS - ECL	KM-40	-----	-----	-----	-----	80502-1	80118	80658	80665	80373-1	80781-1
SS - ICL	KM-50	-----	-----	-----	-----	80503-1	80118	80658	80664	80376-1	80780-1
SS - ECL	KM-50	-----	-----	-----	-----	80503-1	80118	80658	80664	80376-1	80780-1

RA - ICL = RIGHT ANGLE (INTERNAL/EXTERNAL COOLANT)
 RA - ECL = RIGHT ANGLE (EXTERNAL COOLANT)
 SS - ICL = STRAIGHT (INTERNAL/EXTERNAL COOLANT)
 SS - ECL = STRAIGHT (EXTERNAL COOLANT)



MODEL CODES



SPECIALS AVAILABLE UPON REQUEST