



THINK **TOOLING SYSTEMS**,
THINK **KENNAMETAL**.

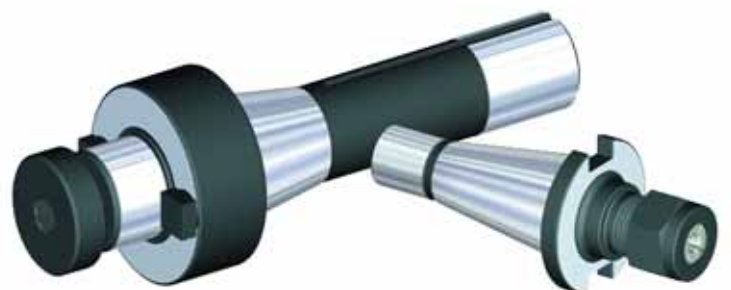


EMSTOOLINGSYSTEM
TOOLINGSYSTEMSTOO
SYSTEMSTOOLINGSYST

QC-R8

TABLE OF CONTENTS

<i>QC30</i>	<i>606</i>
<i>QC40</i>	<i>609</i>
<i>QC50</i>	<i>613</i>
<i>R8</i>	<i>618</i>



STOOLING
OLINGSYST
EMSTOOL

KM SYSTEM

HSK SYSTEM

BT SYSTEM

CV SYSTEM

DV SYSTEM

QC / R8 SYSTEMS

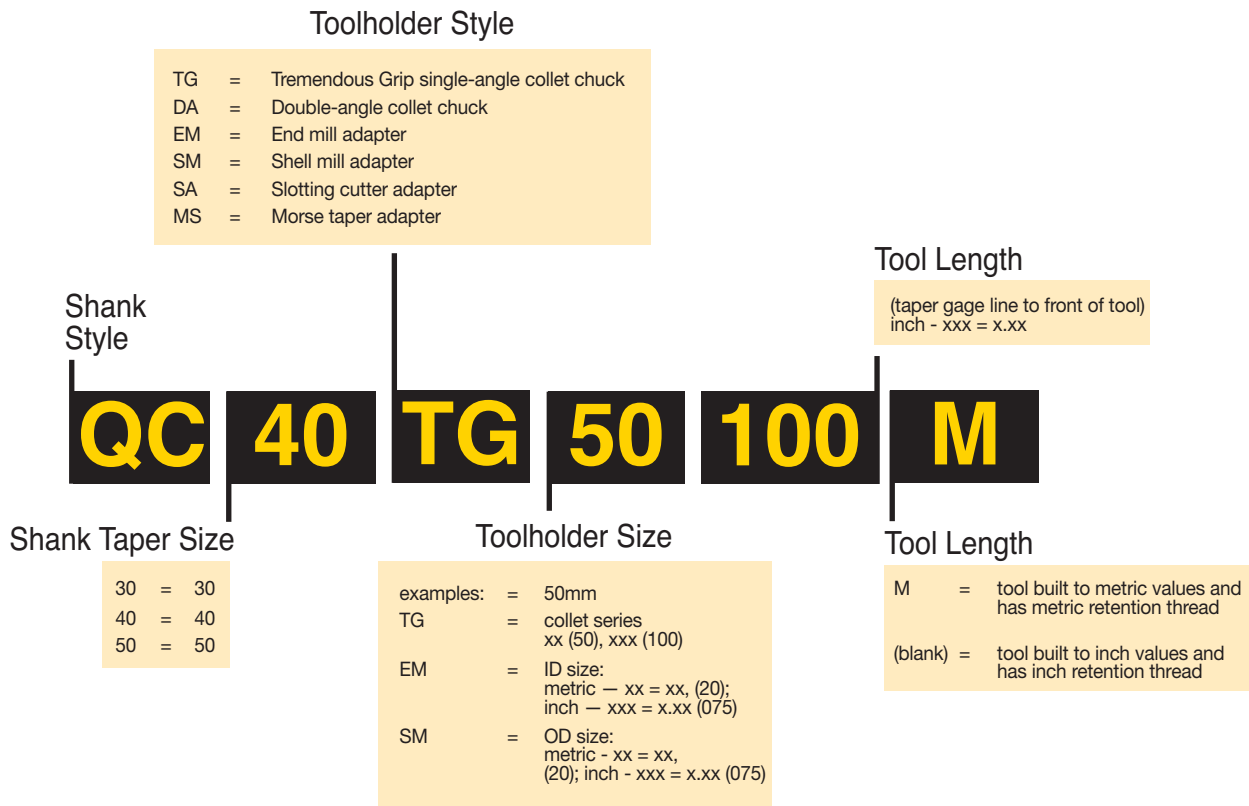
STRAIGHT SHANK

COLLETS / SLEEVES

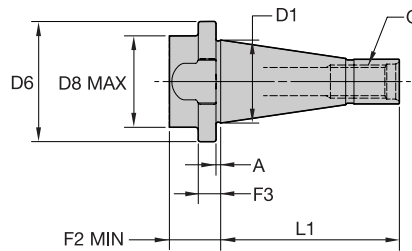
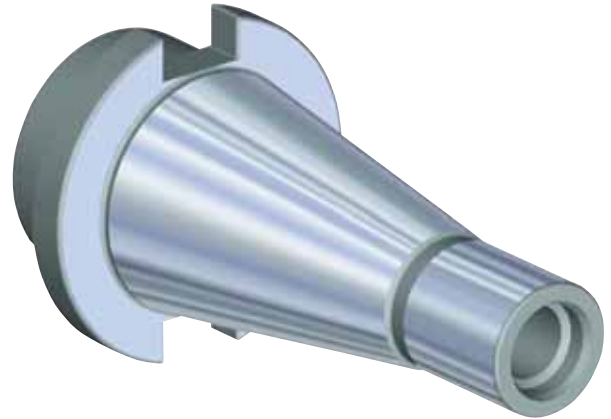
ACCESSORIES

TECHNICAL

INDEX



- Quick-change (QC) shank design is similar to and interchangeable with NMTB shank tooling.
- Hub at the tail end of the taper cone houses the machine's draw bar bolt.
- Drive flange faces are precision ground to accommodate QC locknuts.
- QC locknuts can be retrofitted to manual-loading milling machine spindles to convert them to quick-change systems.
- Tapers are similar to the 7/24 shank cones of the CV, BT and DV tooling.
- Tapers are manufactured to the highest industry standards per ISO-1947.
- Taper accuracy provides optimum fit between spindle and toolholder.
- All non-critical surfaces are black-oxide.
- Coolant is standard feature as enabled by toolholder design.
- QC Erickson quick change shank toolholders perform effectively up to 8,000 rpm, depending on the application and unless stated otherwise. Kennametal recommends the toolholder assembly (toolholder components, collets, cutting tools) be balanced when operating at speeds higher than 8,000 rpm.
- All critical surfaces need to be protected from damage. Neglect from dings and scratches from cutting edges will impair accuracy and performance.
- Make sure components are clean when assembled.
- Never overtighten toolholders. This can permanently destroy their function and accuracy.

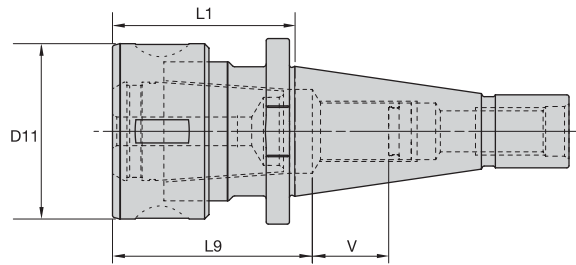


■ QC – Erickson Quick Change Shank Tooling

	D1	D6	D8 max.	L1	F2 min.	F3	A	G
30	31,75 (1.250")	46,03 (1.812")	35,05 (1.380")	68,33 (2.690")	19,81 (.780")	10,69 (.421")	1,96 (.077")	1/2" - 13 UNC - 2B
40	44,45 (1.750")	63,50 (2.500")	50,80 (2.000")	93,73 (3.690")	20,83 (.820")	9,88 (.389")	1,93 (.076")	5/8" - 11 UNC - 2B
50	69,85 (2.750")	88,90 (3.500")	73,66 (2.900")	127,00 (5.000")	30,73 (1.210")	15,09 (.594")	3,58 (.141")	1" - 8 UNC - 2B

TG Single-Angle Collet Chucks

- Tremendous Grip (3:1 advantage).
- Balanced-by-design.
- 1/2" - 13 UNC drawbar thread.
- Through-the-toolholder coolant capability.



TG Collet Series	Collet Capacity			
	mm		inch	
	min.	max.	min.	max.
TG75	2,6	20,0	3/64	3/4
TG100	2,6	25,5	5/64	1

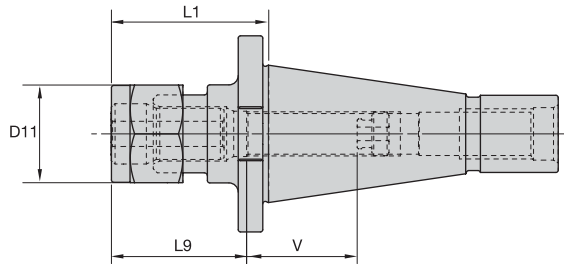
■ TG-QC – Inch Drawbar

order number	catalog number	collet series	D11	L1	L9	V	lbs.	locknut	locknut wrench	ft.lbs	stop screw	wrench size-stop screw
1025640	QC30TG075253	TG75	2.09	2.53	2.31	.37	1.54	NPA075	OEW188	100	SS081041G	4 MM & 5/32
1025641	QC30TG100394	TG100	2.44	3.94	2.94	1.01	3.35	NPA100	OEW225	150	SS081041G	4 MM & 5/32

- Collet must be loaded into locknut first. Before loading into the chuck body, insert the cutting tool, then tighten to the recommended tightening torque.
- Collet chuck technical section, see page 816.
- Supplied with locknut and stop screw.
- Locknut wrench must be ordered separately.
- Interchangeable locknuts, coolant-style locknuts, and coolant discs are available and must be ordered separately; see page 746.
- Stop screw coolant caps are available and must be ordered separately; see page 757.
- Balanceable/Interchangeable locknuts are available and must be ordered separately; see page 740.
- TG standard straight-bore collets, see page 657.
- TG tap collets, see page 657.

KM SYSTEM
 HSK SYSTEM
 BT SYSTEM
 CV SYSTEM
 DV SYSTEM
 QC / R8 SYSTEMS
 STRAIGHT SHANK
 COLLETS / SLEEVES
 ACCESSORIES
 TECHNICAL
 INDEX

- Grip (1:1).
- Balanced-by-design.
- 1/2" - 13 UNC drawbar thread.
- Through-the-toolholder coolant capability.



DA - 08 Collet Series	Collet Capacity			
	mm		inch	
	min.	max.	min.	max.
DA300	0,2	6	1/64	1/4
DA200	0,2	10	1/64	25/64
DA100	1,8	14	1/64	9/16
DA180	2,2	20	1/64	3/4

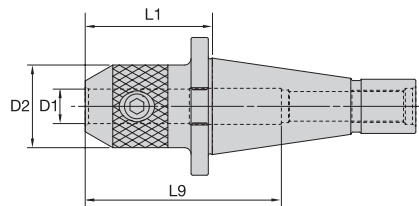
■ DA-QC – Inch Drawbar – Hex Locknut

order number	catalog number	collet series	D11	L1	L9	V	lbs.	locknut	locknut screw	ft.lbs	stop screw	wrench size-stop screw
1015552	QC30DA308162	DA300	.77	1.62	1.34	1.38	.69	LNA308M	OEW17M	20	SS031031G	2 MM & 5/64
1015546	QC30DA208181	DA200	1.15	1.81	1.46	1.38	.77	NPA208	OEW100	40	SS044038G	4 MM & 5/32
1015544	QC30DA108200	DA100	1.44	2.00	1.65	1.10	.90	LNA108M	OEW32M	55	SS056041G	4 MM & 5/32
1015595	QC30DA188206	DA180	1.73	2.06	1.93	.47	.90	NPA188	OEW150	75	SS081041G	4 MM & 5/32

- Tighten locknut to the recommended tightening torque.
- Collet chuck technical section, see page 816.
- Supplied with locknut and stop screw.
- Locknut wrench must be ordered separately.
- Stop screw coolant caps are available and must be ordered separately; see page 757.
- DA standard straight-bore collets, see page 713.
- DA non-pullout collets, see page 713.

End Mill Adapters

- Balanced-by-design.
- 1/2" - 13 UNC drawbar thread.
- Through-the-toolholder coolant capability.



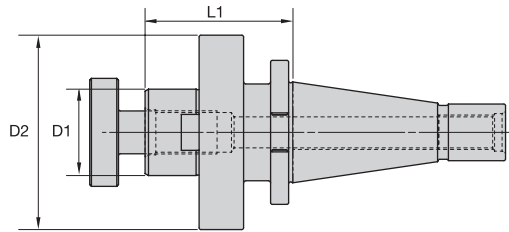
■ EM-QC form AD – Inch Drawbar

order number	catalog number	D1	D2	L1	L9	lbs.	clamp screw	wrench size-clamp screw	ft.lbs
1018668	QC30EM018175	3/16	.69	1.75	3.40	.88	S1045PKG	3/32	3
1018242	QC30EM025175	1/4	1.00	1.75	3.40	.86	ELS025025PKG	1/8	5
1018669	QC30EM038175	3/8	1.00	1.75	3.40	.83	ELS038031PKG	3/16	15
1018670	QC30EM050175	1/2	1.25	1.75	3.07	1.02	ELS044038PKG	7/32	20
1018671	QC30EM062175	5/8	1.44	1.75	2.14	1.14	DWG ELS056038	1/4	40
1018672	QC30EM075213	3/4	1.75	2.13	2.27	1.46	ELS062050PKG	5/16	70
1018714	QC30EM100269	1	2.00	2.69	2.51	1.91	ELS075056PKG	3/8	110
1018715	QC30EM125363	1 1/4	2.50	3.63	2.39	4.41	ELS075069PKG	3/8	110

- IMPORTANT: Do not overtighten clamp screw; use torque recommendations above.
- Supplied with clamp screw.
- Clamp screw wrench not included.

Shell Mill Adapters

- Balanced-by-design.
- 1/2" - 13 UNC drawbar thread.
- Through-the-toolholder coolant capability.



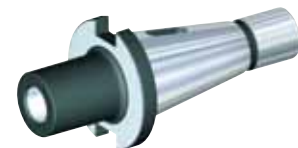
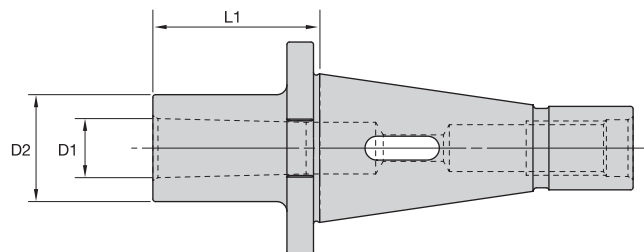
■ SM-QC form AD – Inch Drawbar – Lock Screw Design

order number	catalog number	D1	D2	L1	lbs.	lock screw	wrench size-lock screw	ft.lbs
1018716	QC30SM050125	1/2	1.44	1.25	1.12	KLS05	3/16	14
1018717	QC30SM075131	3/4	1.75	1.31	1.10	KLS07	1/4	45
1018718	QC30SM100131	1	2.19	1.31	1.46	KLS10	5/16	60
1018719	QC30SM125144	1 1/4	2.88	1.44	2.54	KLS12	5/16	70
1018720	QC30SM150156	1 1/2	3.81	1.56	3.46	KLS15	3/8	75

- IMPORTANT: Do not overtighten lock screw; use torque recommendations above.
- Supplied with lock screw and drive keys.
- Interchangeable coolant-style lock screws are available and must be ordered separately; see page 758.
- Lock screw wrench not included.

Morse Taper Adapters

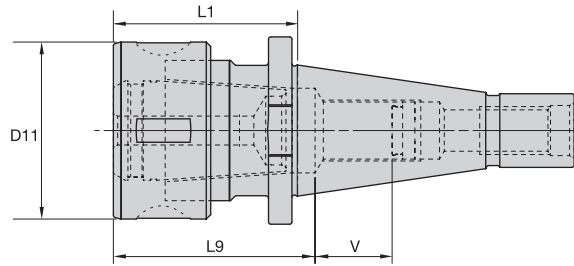
- Balanced-by-design.
- 1/2" - 13 UNC drawbar thread.



■ MT-QC form A – Inch Drawbar

order number	catalog number	system size	D1	D2	L1	lbs.
1018721	QC30MT1100	1	.474	.980	1.000	.68
1018722	QC30MT2212	2	.699	1.240	2.120	1.06
1018723	QC30MT3281	3	.937	1.570	2.810	1.40

- Tremendous Grip (3:1 advantage).
- Balanced-by-design.
- Through-the-toolholder coolant capability.



TG Collet Series	Collet Capacity			
	mm		inch	
	min.	max.	min.	max.
TG75	2,6	20,0	3/64	3/4
TG100	2,6	25,5	5/64	1
TG150	11,6	40,0	23/64	1 1/2

■ TG-QC – Inch Drawbar

order number	catalog number	collet series	D11	L1	L9	V	lbs.
1025642	QC40TG075211	TG75	2.09	2.11	2.31	1.04	2.14
1025643	QC40TG100255	TG100	2.50	2.55	2.72	.41	2.72
1013525	QC40TG150450	TG150	3.48	4.50	3.22	1.24	5.71

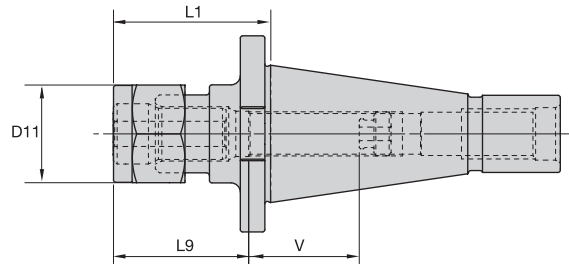
■ Spare Parts

catalog number	locknut	ft.lbs	locknut wrench	stop screw	wrench size-stop screw
QC40TG075211	NPA075	100	OEW188	SS081041G	4 MM & 5/32
QC40TG100255	NPA100	150	OEW225	SS112041G	4 MM & 5/32
QC40TG150450	NPA150	200	PSW350	SS125050G	4 MM & 5/32

- Collet must be loaded into locknut first. Before loading into the chuck body, insert the cutting tool, then tighten to the recommended tightening torque.
- Collet chuck technical section, see page 816.
- Supplied with locknut and stop screw.
- Locknut wrench must be ordered separately.
- Interchangeable locknuts, coolant-style locknuts, and coolant discs are available and must be ordered separately; see page 746.
- Stop screw coolant caps are available and must be ordered separately; see page 757.
- Balanceable/Interchangeable locknuts are available and must be ordered separately; see page 740.
- TG standard straight-bore collets, see page 657.
- TG tap collets, see page 657.

DA 08 Series – Double-Angle Collet Chucks

- Grip (1:1).
- Balanced-by-design.
- Through-the-toolholder coolant capability.



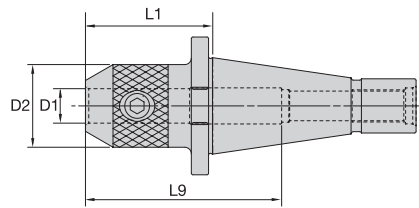
DA - 08 Collet Series	Collet Capacity			
	mm		inch	
	min.	max.	min.	max.
DA300	0,2	6	1/64	1/4
DA200	0,2	10	1/64	25/64
DA100	1,8	14	1/64	9/16
DA180	2,2	20	1/64	3/4

■ DA-QC - Inch Drawbar - Hex Locknut

order number	catalog number	collet series	D11	L1	L9	V	lbs.	locknut	locknut wrench	ft.lbs	stop screw	wrench size-stop screw
1015413	QC40DA308163	DA300	.77	1.63	1.30	1.30	1.69	LNA308M	OEW17M	20	SS031031G	2 MM & 5/64
1015412	QC40DA208181	DA200	1.15	1.81	1.46	2.05	1.78	NPA208	OEW100	40	SS044038G	4 MM & 5/32
1015410	QC40DA108200	DA100	1.44	2.00	1.65	2.05	1.89	LNA108M	OEW32M	55	SS056041G	4 MM & 5/32
1015411	QC40DA188206	DA180	1.73	2.06	1.93	1.73	1.82	NPA188	OEW150	75	SS081041G	4 MM & 5/32

- Tighten locknut to the recommended tightening torque.
- Collet chuck technical section, see page 816.
- Supplied with locknut and stop screw.
- Locknut wrench must be ordered separately.
- Stop screw coolant caps are available and must be ordered separately; see page 757.
- DA standard straight-bore collets, see page 713.
- DA non-pullout collets, see page 713.

- Balanced-by-design.
- 5/8" - 11 UNC drawbar thread.
- Through-the-toolholder coolant capability.



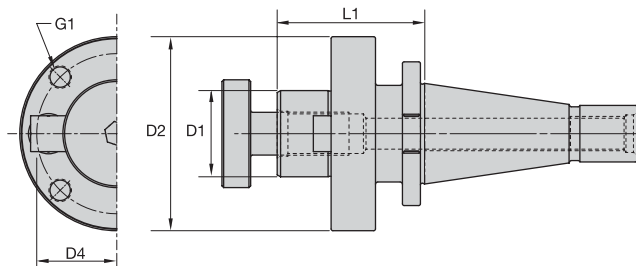
EM-QC form AD – Inch Drawbar

order number	catalog number	D1	D2	L1	L9	lbs.	clamp screw	wrench size-clamp screw	ft.lbs
1018781	QC40EM018231	3/16	.69	2.31	4.82	1.74	S1045PKG	3/32	3
1018667	QC40EM025138	1/4	1.00	1.38	3.89	1.73	ELS025025PKG	1/8	5
1018782	QC40EM038231	3/8	1.00	2.31	4.82	1.86	ELS038031PKG	3/16	15
1018783	QC40EM050231	1/2	1.25	2.31	4.82	2.14	ELS044038PKG	7/32	20
1018844	QC40EM062231	5/8	1.50	2.31	3.56	2.34	ELS056050PKG	1/4	40
1018845	QC40EM075231	3/4	1.75	2.31	3.94	2.34	ELS062050PKG	5/16	70
1018846	QC40EM088294	7/8	2.00	2.94	4.19	2.90	ELS062050PKG	5/16	70
1018847	QC40EM100338	1	2.00	3.38	4.43	3.00	ELS075056PKG	3/8	110
1018848	QC40EM125369	1 1/4	2.50	3.69	2.39	4.66	ELS075062PKG	3/8	110
1019099	QC40EM150395	1 1/2	2.75	3.95	2.82	5.29	ELS075062PKG	3/8	110

- IMPORTANT: Do not overtighten clamp screw; use torque recommendations above.
- Supplied with clamp screw.
- Clamp screw wrench not included.

Shell Mill Adapters

- Balanced-by-design.
- Through-the-toolholder coolant capability.



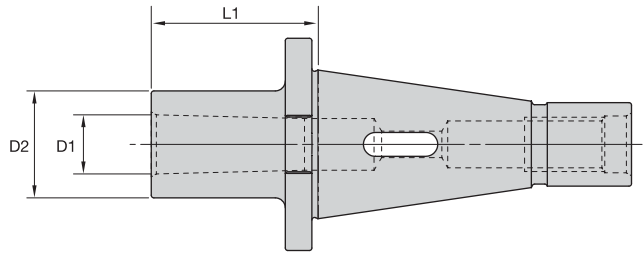
SM-QC form AD – Inch Drawbar – Lock Screw Design

order number	catalog number	D1	D2	D4	G1	L1	lbs.	lock screw	wrench size-lock screw	ft.lbs
1018849	QC40SM050088	1/2	1.44	—	—	.88	1.90	KLS05	3/16	14
1018850	QC40SM075088	3/4	1.75	—	—	.88	2.08	KLS07	1/4	45
1018851	QC40SM100131	1	2.19	—	—	1.31	2.68	KLS10	5/16	60
1018852	QC40SM125150	1 1/4	2.88	—	—	1.50	3.41	KLS12	5/16	70
1018853	QC40SM150163	1 1/2	3.38	—	—	1.63	4.58	KLS15	3/8	75
1018904	QC40SM200163	2	4.88	4.00	5/8-11 UNC	1.63	6.82	KLS20	9/16	100

- IMPORTANT: Do not overtighten lock screw; use torque recommendations above.
- Supplied with lock screw and drive keys.
- Interchangeable coolant-style lock screws are available and must be ordered separately; see page 758.
- Lock screw wrench not included.

Morse Taper Adapters

- Balanced-by-design.

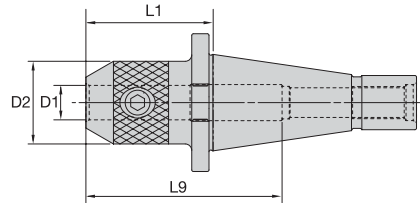


■ MT-QC form A – Inch Drawbar

order number	catalog number	system size	D1	D2	L1	lbs.
1018905	QC40MT1094	1	.474	1.000	.940	1.64
1018906	QC40MT2206	2	.699	1.250	2.060	2.07
1018907	QC40MT3225	3	.937	1.500	2.250	2.25
1018908	QC40MT4306	4	1.230	1.875	3.060	2.32
1019097	QC40MT5700	5	1.747	2.375	7.000	5.91

End Mill Adapters

- Balanced-by-design.
- 1" - 8 UNC draw bar thread.
- Through-the-toolholder coolant capability.



■ EM-QC form AD – Inch Drawbar

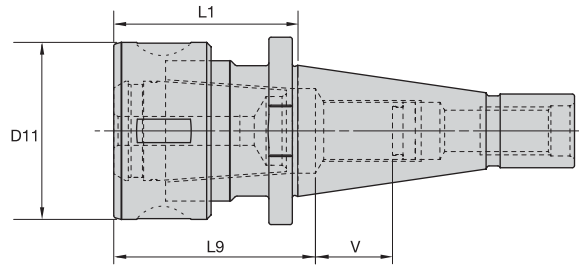
order number	catalog number	D1	D2	L1	L9	lbs.	clamp screw	wrench size-clamp screw	ft.lbs
1019096	QC50EM038275	3/8	1.00	2.75	5.96	5.82	ELS038031PKG	3/16	15
1018979	QC50EM050275	1/2	1.38	2.75	5.96	6.08	ELS044038PKG	7/32	20
1019101	QC50EM062275	5/8	1.63	2.75	5.96	6.19	ELS056050PKG	1/4	40
1019100	QC50EM075275	3/4	1.75	2.75	5.96	6.31	ELS062050PKG	5/16	70
1018980	QC50EM088200	7/8	2.00	2.00	5.21	6.07	ELS062050PKG	5/16	70
1018981	QC50EM100306	1	2.00	3.06	4.59	6.62	ELS075056PKG	3/8	110
1019102	QC50EM125306	1 1/4	2.50	3.06	2.50	7.60	ELS075062PKG	3/8	110
1019145	QC50EM150350	1 1/2	2.75	3.50	2.94	8.44	ELS075069PKG	3/8	110
1018982	QC50EM200475	2	3.75	4.75	3.50	13.72	ELS100088PKG	1/2	150

IMPORTANT: Do not overtighten clamp screw; use torque recommendations above.

Supplied with clamp screw.

Clamp screw wrench not included.

- Tremendous Grip (3:1 advantage).
- Balanced-by-design.
- 1" - 8 UNC draw bar thread.
- Through-the-toolholder coolant capability.



TG Collet Series	Collet Capacity			
	mm		inch	
	min.	max.	min.	max.
TG100	2,6	25,5	5/64	1
TG150	11,6	40,0	23/64	1 1/2

■ TG-QC form AD – Inch Drawbar

order number	catalog number	collet series	D11	L1	L9	V	lbs.
1025798	QC50TG100272	TG100	2.50	2.72	2.94	2.06	7.10
1013526	QC50TG150284	TG150	3.48	2.84	3.25	1.37	7.19

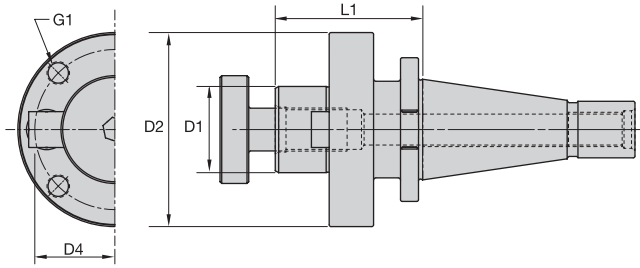
■ Spare Parts

catalog number	locknut	locknut wrench	ft.lbs	stop screw	wrench size-stop screw
QC50TG100272	NPA100	OEW225	150	SS112041G	4 MM & 5/32
QC50TG150284	NPA150	PSW350	200	SS162062G	4 MM & 5/32

- Collet must be loaded into locknut first. Before loading into the chuck body, insert the cutting tool, then tighten to the recommended tightening torque.
- Collet chuck technical section, see page 816.
- Supplied with locknut and stop screw.
- Locknut wrench must be ordered separately.
- Interchangeable locknuts, coolant-style locknuts, and coolant discs are available and must be ordered separately; see page 746.
- Stop screw coolant caps are available and must be ordered separately; see page 757.
- Balanceable/Interchangeable locknuts are available and must be ordered separately; see page 740.
- TG standard straight-bore collets, see page 657.
- TG tap collets, see page 657.

Shell Mill Adapters

- Balanced-by-design.
- 1" - 8 UNC draw bar thread.
- Through-the-toolholder coolant capability.



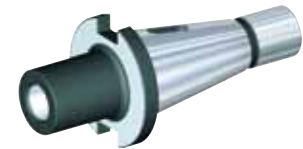
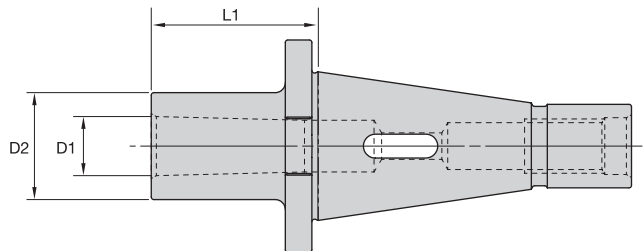
■ SM-QC form AD – Inch Drawbar – Lock Screw Design

order number	catalog number	D1	D2	D4	G1	L1	lbs.	lock screw	wrench size-lock screw	ft.lbs
1925520	QC50SM050125	1/2	1.44	—	—	1.25	5.71	KLS05	3/16	14
1018983	QC50SM075125	3/4	1.75	—	—	1.25	5.78	KLS07	1/4	45
1019273	QC50SM075600	3/4	1.75	—	—	6.00	9.35	KLS07	1/4	45
1019024	QC50SM100188	1	2.19	—	—	1.88	7.28	KLS10	5/16	60
1019334	QC50SM100600	1	2.19	—	—	6.00	11.55	KLS10	5/16	60
1019335	QC50SM100800	1	2.19	—	—	8.00	14.36	KLS10	5/16	60
1019025	QC50SM125188	1 1/4	2.88	—	—	1.88	14.78	KLS12	5/16	70
1019336	QC50SM125600	1 1/4	2.75	—	—	6.00	21.76	KLS12	5/16	70
1019337	QC50SM1251000	1 1/4	2.75	—	—	10.00	8.42	KLS12	5/16	70
1019146	QC50SM150188	1 1/2	3.38	—	—	1.88	8.99	KLS15	3/8	75
1019095	QC50SM200188	2	4.88	4.00	5/8-11 UNC	1.88	11.48	KLS20	9/16	100
1019026	QC50SM250200	2 1/2	4.88	4.00	5/8-11 UNC	2.00	11.94	—	1/2	70

- IMPORTANT: Do not overtighten lock screw; use torque recommendations above.
- Supplied with lock screw and drive keys.
- Interchangeable coolant-style lock screws are available and must be ordered separately; see page 758.
- Lock screw wrench not included.

Morse Taper Adapters

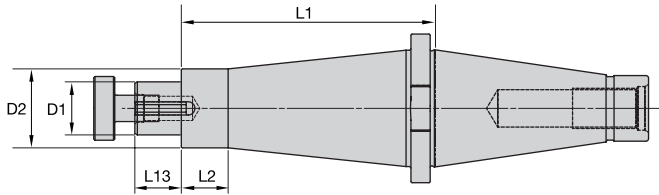
- Balanced-by-design.
- 1" - 8 UNC draw bar thread.



■ MT-QC form A – Inch Drawbar

order number	catalog number	collet series	D1	D2	L1	lbs.
1019027	QC50MT2188	2	.699	1.250	1.880	5.91
1019028	QC50MT3238	3	.937	1.620	2.380	6.35
1019029	QC50MT4325	4	1.230	2.000	3.250	6.73
1019030	QC50MT5462	5	1.747	2.750	4.620	9.15

- No through-the-toolholder coolant capability - form A.
- 1" - 8 UNC drawbar thread.



■ **SA-QC form A – Inch Drawbar**

order number	catalog number	D1	D2	L1	L2	L13	lbs.	lock screw	wrench size-lock screw	ft.lbs	slot drive key
1026342	QC50SA125600	1 1/4	1.86	6.00	1.10	1.09	12.27	KLS12	5/16	70	DWG SDK125119
1026343	QC50SA150600	1 1/2	2.11	6.00	1.25	1.70	13.49	KLS15	3/8	75	DWG SDK150175
1026222	QC50SA200600	2	2.75	6.00	5.41	1.70	16.72	KLS20	9/16	100	SDK200169

- IMPORTANT: Do not overtighten lock screw; use torque recommendations above.
- Supplied with lock screw and drive key.
- Lock screw wrench not included.

TG Flush Face Locknut Coolant Cap Accessory

NEW!



Upgrade to a sealed coolant cap!

Use the new Flush Face locknut coolant cap assembly accessory with standard ER coolant disks to create a sealed unit without the use of bonded collets.

Convert to this locknut system from any existing Kennametal TG collet system to avoid collet chip packing and ensure an adequate through-coolant seal.

Advanced features!

- Use with high-pressure coolant up to 1,500 PSI (103 bar).
- Use standard TG collets and ER coolant disks.
- More effective than bonded collets.
- Seal against chip packing and machined contaminants in collet slots and locknuts.

KM SYSTEM

HSK SYSTEM

BT SYSTEM

CV SYSTEM

DV SYSTEM

QC / R8 SYSTEMS

STRAIGHT SHANK

COLLETS / SLEEVES

ACCESSORIES

TECHNICAL

INDEX

Toolholder Size

- DA = collet series xxx (100)
- EM = ID size:
metric - xx =xx, (20)
inch - xxx = x.xx (075)
- SM = OD size:
metric - xx = xx (20)
inch - xx = x.xx (075)

Shank Style

R8 TG 50 100

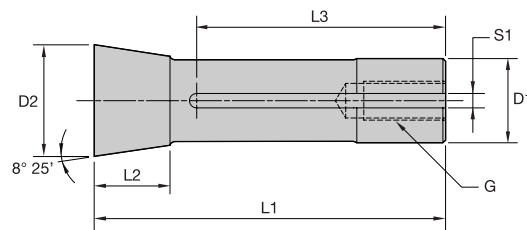
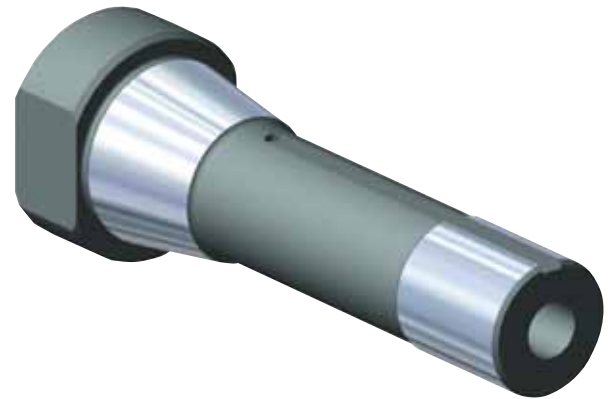
Toolholder Style

- DA = Double-angle collet chuck
- EM = End mill adapter
- SM = Shell mill adapter

Tool Length

(tool gage line to front of tool)
inch - xxx = x.xx

- Locking groove aligns into a locking mechanism when inserted into the spindle.
- Milling machine drawbar bolt draws the tool into the spindle for a secure connection.
- All non-critical surfaces are black oxide.
- Coolant is standard feature as enabled by toolholder design.
- R8 shank toolholders perform effectively up to 8,000 rpm, depending on the application and unless stated otherwise. Kennametal recommends the toolholder assembly (toolholder components, collets, cutting tools) be balanced when operating at speeds higher than 8,000 rpm.
- All critical surfaces must be protected from damage. Neglect from dings and scratches from cutting edges will impair accuracy and performance.
- Make sure components are clean when assembled.
- Never overtighten toolholders. This can permanently destroy their function and accuracy.

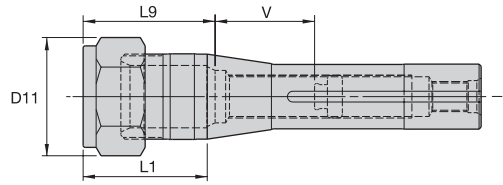


R8 — Shank Tooling

	D1	D2	L1	L2	L3	S1	G
R8	.469	1.241	4.000	.938	2.750	.157	7/16-20 UNF - 2B

DA 08 Series – Double-Angle Collet Chucks

- Grip (1:1).



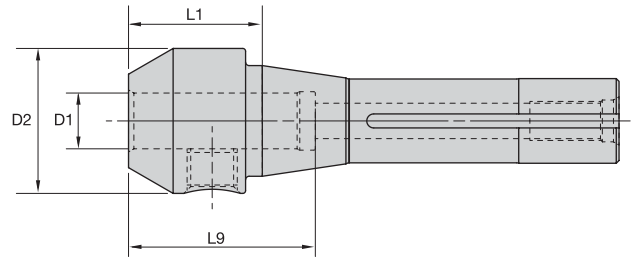
DA - 08 Collet Series	Collet Capacity		mm		inch	
	min.	max.	min.	max.		
DA180	2,2	20	1/64	3/4		

■ DA-R8 – Hex Locknut

order number	catalog number	CST collet series	D11	L1	L9	V	lbs.	locknut	locknut wrench	ft.lbs	stop screw	wrench size-stop screw
1015548	R8DA188181	DA180	1.72	1.81	2.06	2.19	1.01	NPA188	OEW150	75	SS062041G	4 MM & 5/32

- Tighten locknut to the recommended tightening torque.
- Collet chuck technical section, see page 816.
- Supplied with locknut and stop screw.
- Locknut wrench must be ordered separately.
- Stop screw coolant caps are available and must be ordered separately; see page 757.
- DA standard straight-bore collets, see page 713.
- DA non-pullout collets, see page 713.

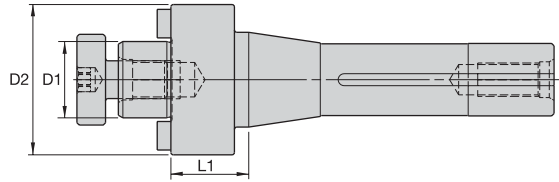
End Mill Adapters



■ EM-R8

order number	catalog number	D1	D2	L1	L9	lbs.	clamp screw	wrench size-clamp screw	ft.lbs
1286049	R8EM038100	3/8	1.00	1.00	1.73	.90	ELS038031PKG	3/16	15
1286050	R8EM050112	1/2	1.24	1.13	1.97	.95	ELS044038PKG	7/32	20
1286051	R8EM062150	5/8	1.63	1.50	2.09	1.29	ELS056050PKG	1/4	40
1229174	R8EM075262	3/4	1.75	2.63	2.22	2.04	ELS062050PKG	5/16	70
1286052	R8EM088306	7/8	2.00	3.06	2.22	2.80	ELS062050PKG	5/16	70
1286053	R8EM100306	1	2.00	3.06	2.46	2.64	ELS075056PKG	3/8	110
1286054	R8EM125306	1 1/4	2.50	3.06	2.51	3.72	ELS075056PKG	3/8	110

- IMPORTANT: Do not overtighten clamp screw; use torque recommendations above.
- Supplied with clamp screw.
- Clamp screw wrench not included.



■ SM-R8 – Inch – Lock Screw Design

order number	catalog number	D1	D2	L1	lbs.	lock screw	wrench size-lock screw	ft.lbs
1286058	R8SM050102	1/2	1.28	1.02	1.23	KLS05	3/16	14
1286059	R8SM075102	3/4	1.63	1.02	1.50	KLS07	1/4	45
1286060	R8SM100102	1	1.97	1.02	1.85	KLS10	5/16	60
1286061	R8SM125102	1 1/4	2.50	1.02	2.51	KLS12	5/16	70

- IMPORTANT: Do not overtighten lock screw; use torque recommendations above.
- Supplied with lock screw and drive keys.
- Lock screw wrench not included.

KM SYSTEM

HSK SYSTEM

BT SYSTEM

CV SYSTEM

DV SYSTEM

QC / R8 SYSTEMS

STRAIGHT SHANK

COLLETS / SLEEVES

ACCESSORIES

TECHNICAL

INDEX