



Stellite™ 720 UltraFlex™ provides a metallurgically-bonded cladding with minimal dilution to a metal substrate, providing superior wear resistance and exceptionally high corrosion resistance in reducing atmospheres. This cladding may be applied to internal diameters, complex shapes, and non-line-of-sight geometries.

### APPLICATIONS

This UltraFlex Cladding has been applied with good results on bulk material conveyance pipe, conveyance screws, refinery bends, pump casings, and valve components.

**FORM:** UltraFlex™ Cladding

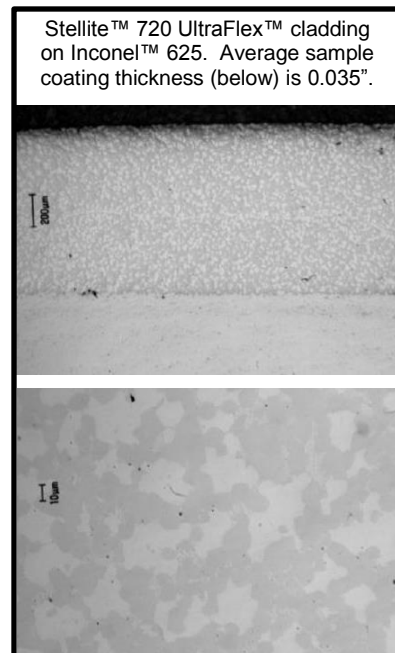
### NOMINAL COMPOSITION (MASS %)

[CLADDING MATERIAL]

Co	C	Ni	Fe	Cr	Mo
Balance	2.45	3 Max.	3 Max.	33	18

### TYPICAL PROPERTIES

Density (g/cm <sup>3</sup> )	8.75
Melting Point °F (°C)	2300 (1260)
Abrasion per ASTM G65 (Method B)	6.7mm <sup>3</sup>
Hardness HRC	53-60



Kennametal® manufactures sophisticated alloys in the form of castings, powders, coatings, consumables, and machined parts that resist wear, corrosion, and abrasion. Information provided in this document is intended only for general guidance about Kennametal® products and is the best information in our possession at the time. Product users may request information about their individual use of our products, but Kennametal® does not warrant or guarantee this information in any way. Selection and purchase of Kennametal® products is the sole responsibility of the product user based on the suitability of each use. Individual applications must be fully evaluated by the user, including compliance with applicable laws, regulations, and non-infringement. Kennametal® cannot know or anticipate the many variables that affect individual product use and individual performance may vary. For these reasons, Kennametal® does not warrant or guarantee advice or information in this document, assumes no liability regarding the same, and expressly disclaims any warranty of any kind, including any warranty of fitness for a particular purpose, regarding the same. Kennametal®, Stellite™ and UltraFlex™ are trademarks of Kennametal Inc., Inconel™ is a trademark of Special Metals Corp.

#### World Headquarters

Kennametal Inc.  
1600 Technology Way  
Latrobe, PA 15560  
USA  
T 800 446 7738 (US & Canada)  
E-mail: [ftmill.service@kennametal.com](mailto:ftmill.service@kennametal.com)

#### Americas

Kennametal Conformal Clad Inc.  
501 Park East Blvd.  
New Albany, IN 47150  
USA  
T 1 888 289 4590  
E-mail: [k-nalb.cs@kennametal.com](mailto:k-nalb.cs@kennametal.com)